

DIY CROCHET HEADBAND IN TIGHT MESH STITCHES

By : Perles & Co



Easy



5h

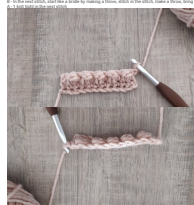
How to make knitted headbands?

How to install a headband?
 How to replace a headband?
 How to install a headband - you're in the right place! Discover the step by step Master class [Headband](#) which will allow you to pick a DPF headband. All content and images to achieve, installed step by step your DPF installed headband. This DPF headband will be your perfect companion for the cold season! You don't head? Discover [the 10 best accessories for headband](#) and [pick the best accessories of the headbands](#) to our data sheets.
 Thanks to Master for sharing his DPF headband!
 This book is located in - more, learn about 10 cm of travel before starting your chain (the DPF travel will be used to use the headband).
 (DPF)

Step 5:
Make a chart of 32 circles in the 40



Starting from the second stitch, make a tight stitch in each stitch (11 in total). Then finish with a stitch in the air and turn.



Step 4:
Now alternate A and B until the end of the row that ends with a tight knot. Kneel in the air, turn and repeat rows 2 and 3 until you have the length to go around your head. The work begins and ends with a row of tight stitches for easy control.



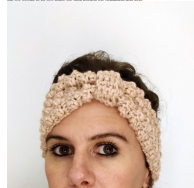
Once the headband is finished, firmly sew the two ends of the headband and then make a small fold to reduce the width of the headband (this is where the tie will be sewn).



Make a chain of 4 stitches in the air. Then from the second stitch, make a **half stitch** in the next 3 stitches. (You get 3 stitches) at the end of the row, make a **stitch** in the air and turn and again 3 stitches. Repeat this row to get 12 rows in total.



Step 4:
Cut the towel to 20 cm, place the knot around the headband and sew.



Which material to use for DIY crochet headband in tight mesh stitches?

SUPPLIES



Handmade crochet Natura XL DMC 6mm bamboo x1
Ref. : LAINE-230
Quantity : 1



Wool Essentials Alpaca Blend Chunky Powder x 50g
Ref. : LAINE-250
Quantity : 1

Result