

STAR BEADS AND KOS® STYLE GLASS BEADED CUFFLINKS

By : Tiffanie Perles&Co



Easy

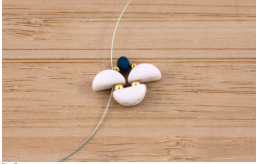


2h30

How to weave a Star Beads cuff?
Here is a beginner tutorial for creating a cuff bracelet with Star Beads by Perles and Co and Kuchi Beads by Patach. Discover also [the history of the Beads](#), including the Green Turquoise Kuchi Beads used in this DIY. Its unusual aspect gives more depth to this cuff inspired by the architecture of Marrakech.
Step 1
Cut a little over 1.2 m of thread and put it on a needle size 10 to 12. In this tutorial we use 400 thread but you can also use Rayon rayon thread in 10 or 12 mm. Thread 1 Kuchi pearl, 1 Mopali 11/0 seedling, 1 Kuchi pearl through the two holes; 1 seed, 1 Kuchi. Follow the orientation of the beads on the picture. Leave 15 cm at end of wire.



Step 2
Thread 1 seed 15/0, 1 round flat faceted, 1 seed 15/0 and return to the first Kuchi threaded. Also go to the seedling 11/0 below and the second Kuchi.



Step 3
Thread 1 seed 15/0, 1 round flat faceted, 1 seed 15/0, 1 Kuchi, 1 seed 11/0 and go into the Kuchi top.



Step 4
Repeat step 3 until you have a bracelet of 20 to 41 Kuchi beads depending on the size of your wrist. Make a second bracelet by repeating all the previous steps. It may happen that there is not enough Kuchi in the bag to make two pieces of 41 beads. In this case, make two bracelets and add open rings at the last step.



Step 5
Cut out of the Kuchi pearl indicated by a red circle on the picture. Thread 2 seed 15/0, 1 seed 11/0, 1 Star Beads, 1 seed 11/0, 2 seed 15/0. Go through the beads indicated by the red line. Repeat to attach the other side of the Star Bead.



Step 6
Follow the photo to find out where to get the needle. Add 1 seed 11/0 between the 2 seed 15/0 and all at the place indicated by the arrow. Repeat step 5.



Step 7
Repeat steps 5 and 6 until you have tied the two parts of the bracelet together. Also add the seed 11/0 at the bottom of the bracelet.



Step 8
Cut out of the bottom Kuchi bead, take a new thread of 1.2 meters. Add 1 seed 11/0, 2 seed 15/0, 1 round flat faceted round, go through the 11/0 seed, in the Star Beads and in the other seed 11/0 and thread 1 faceted round, 2 seedlings 15/0 and 1 seed 11/0.



Step 9
Thread 2 seed beads 15/0, 1 seed 11/0, 1 ring closed, 1 seed 11/0, 2 seed 15/0, return to the Kuchi bead and go through the beads once more. Pass in the pearl 11/0 under the Kuchi then in the 15/0 and the round flat faceted. Attention the photo below is not correct. To have a larger bracelet, go through a closed ring and not directly in the clasp.



Step 10
Repeat step 9 to make the other band using the two flat faceted beads and the Star Beads as benchmarks. Do the same on the other side of the cuff. Add an open ring in each closed ring and close them on the clasp rings.



Note: To change the thread making a knot, first untie the already woven threads, then run the beads and cut the remaining thread. Cut a new yarn, knot it and do the same thing before you start weaving again.



Which material to use for Star Beads and Kos® style glass beaded cufflinks?

SUPPLIES



4X0.7mm Open Jump Rings - European-made -fine Gold plated plated x50
Ref. : ACC-367
Quantity : 1



5 strands magnetic clasp 30mm Gold tone x1
Ref. : FRM-484
Quantity : 1



Gold filled closed jumprings 4x0.7mm x10
Ref. : GLD-027
Quantity : 1



Miyuki Seed beads Duracoat 11/0 4203 - Galvanized Yellow Gold
Ref. : MR11/4203
Quantity : 1



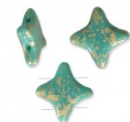
Miyuki Seed beads 15/0 1053 - Galvanized Yellow Gold
Ref. : MR15/1053
Quantity : 1



Faceted flat round beads 2.3x2 mm Marine Blue Frosted x39cm
Ref. : RVC-662
Quantity : 1



Glass beads Kos® by Puca® 6x3 mm Opaque White Ceramic Look x10g
Ref. : TCHE-893
Quantity : 1



Star Beads glass beads by Perles & Co 11x11 mm Green Turquoise Gold Splash x30
Ref. : TCHE-905
Quantity : 1

SUPPLIES



John James Beading needle Size 10 32,5x0,53 mm x20
Ref. : ACC-201
Quantity : 1



Fireline braided Nylon thread 0.12 mm (6LB) Crystal x45 m
Ref. : BRF-116
Quantity : 1

Result