

## SEASHELL BRACELET CHAIN AND POMPON

By : Perles & Co



Easy



0 minutes

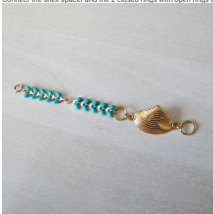
To make this bracelet trendy colors of summer, you will simply need a set of [gillies](#) (flat, round and cutting).  
This bracelet corresponds to a standard wrist circumference of 19 cm, it's up to you to adapt the dimensions for a bespoke jewel!  
Step 1 :  
Cut the chain ears into two pieces of 5 ears.  
Connect them with an open ring. For more info on this technique, click here: [How to open a ring?](#)



Using another open ring, attach the clasp.



2nd step:  
Connect the shell spacer and the 2 closed rings with open rings as below:



Step 3:  
Cut two pieces of 5 cm gold chain and connect them to the rest of the bracelet with open rings.



Step 4:  
Hang 2 open 5.5 mm rings by threading the pompom on the last one.



Step 5:  
Thread the beads onto flat head nails and form a loop. For more info on this technique, click here: [How to form a loop?](#)  
Hang the beads on the bracelet.



Your jewel is finished!



## Which material to use for Seashell bracelet chain and pompon?

### SUPPLIES



Jumpings Closed 7x1 mm fine Gold plated x25  
Ref. : ACC-553  
Quantity : 1



Chain with enameled cobs 6.3mm Mint gold tone x 50cm  
Ref. : CHR-104  
Quantity : 1



Jaseron chain 2mm fine Gold plated x 1m  
Ref. : CHU-090  
Quantity : 1



Fire Polished faceted round beads 3mm Op Green Turquoise Silk M x50  
Ref. : FAC-939  
Quantity : 1



Fine Gold plated springing clasp with tag 5mm x1  
Ref. : FRM-583  
Quantity : 1



shell spacer 2 loops 25mm fine Gold plated tone x1  
Ref. : INT-823  
Quantity : 1



Cotton Pompon 15 mm Corall - Fine Gold Plated x1  
Ref. : LCD-530  
Quantity : 1



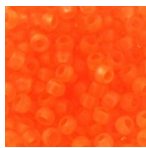
Jumpings open 5.5x0.8mm fine Gold plated x50  
Ref. : OAC-010  
Quantity : 1



Jumpings open 3.3x0.6mm fine Gold plated satiné x10  
Ref. : OAC-1226  
Quantity : 1



Head pin 25x1.6x0,7mm soft gold color x50  
Ref. : OAC-248  
Quantity : 1



Seed beads 2,5mm Orange Fluo Frosted x10g  
Ref. : ROC-427  
Quantity : 1

Result