

BRACELET AND NECKLACE WITH NATURAL STONES

By : Pierre



Easy



30 minutes

How to make a necklace with natural stones?

Who says boys can't wear jewelry? And more importantly, that they couldn't make their own? In this tutorial, discover how to easily create a trendy necklace and bracelet for men, made with stainless steel chains and natural gemstones.

For this project, I chose to combine two chain sizes: a thicker one for the necklace and a thinner one for the bracelet, to achieve a nice contrast. As for the stones, I opted for blue hues with a lapis lazuli flower and a sodalite oval pendant. This mix of shades creates a style that's both elegant and assertive.

Of course, you're free to personalize your jewelry! You can replace these stones with other gems to suit your tastes - such as aventurine, red jasper or tiger's eye, available among [our new releases](#).

A little tip: stainless steel is harder to work with than 925 Sterling Silver, especially on thick meshes like these. So use good jewelry pliers for easier mounting.

Follow the steps below to make this bracelet and necklace set! Good luck :)

Don't forget to share your creations on [Instagram](#), [TikTok](#) or [Facebook](#) @PerlesAndCo, we can't wait to see your versions!

Which material to use for Bracelet and necklace with natural stones?

SUPPLIES



11.9mm 316L Stainless Steel cable Mesh Chain x50cm
Ref. : CHU-234
Quantity : 1



13.8mm 316L Stainless Steel cable Mesh Chain x50cm
Ref. : CHU-235
Quantity : 1



12x1.8mm 304 Stainless steel Round open jump rings x10
Ref. : INX-452
Quantity : 1



30x15 mm oval gemstone pendant - Sodalite x1
Ref. : PGM-967
Quantity : 1



20 mm gemstone flower pendant - Lapis Lazuli x1
Ref. : PGM-980
Quantity : 1



10mm 304 stainless steel spring clasp with open ring x1
Ref. : SST-892
Quantity : 2

steps

★ Step 1/23

Open the first 4 rings and pass them over the links at the ends of the chain, as well as over the oval sodalite pendant.



★ Step 2/23

Do it on both sides.



★ Step 3/23

This is the result.



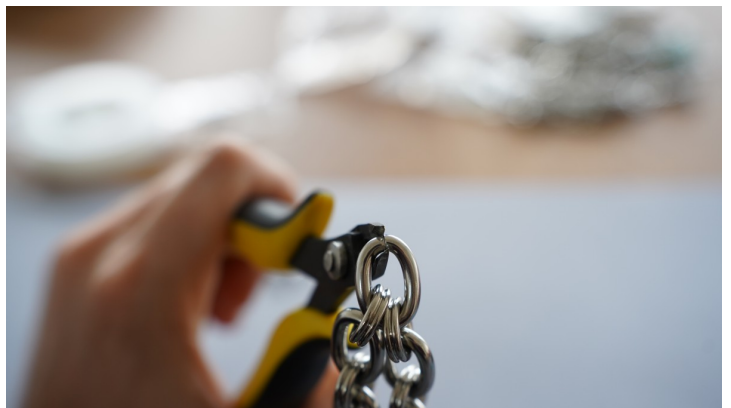
★ Step 4/23

Calculate the size of your neck using a master ribbon, so you'll know how many links to remove before putting on the clasp.



★ Step 5/23

To remove a link, use cutting pliers at the link junction, and pry with 2 flat-nose pliers. Choose pliers that are large enough to give you extra strength. Stainless steel links can be hard to open.



★ Step 6/23

Be sure to calculate the number of links to be removed according to the size of the desired necklace, the chain. In the photos, the finished necklace measures 46 cm; if the pendant and clasps are removed, it measures approx. 38-39 cm.



★ Step 7/23

Once you're happy with the length, take 2 open rings, open them with 2 flat pliers, and thread them on either side of a spring clasp.



★ Step 8/23

Then thread it through the last link at the end of the chain.



★ Step 9/23

Do the same on the other side.



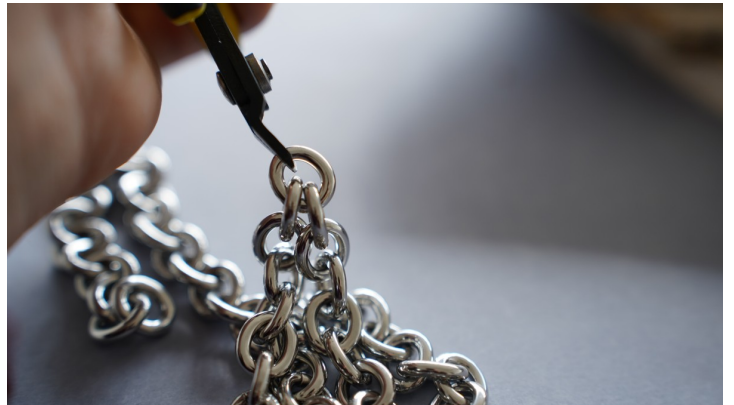
★ Step 10/23

And that's it, you've made the necklace! Now we'll make the bracelet.



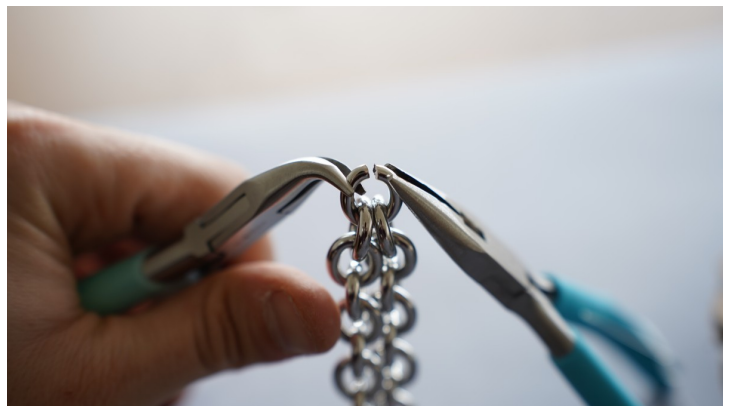
★ Step 11/23

Pinch one of the links at its junction using a pair of wire cutters, to spread the link slightly.



★ Step 12/23

Spread the link using 2 pliers. I recommend using large fine-nose tooling pliers if you have them in your workshop, as they give you more power to spread stainless steel links.



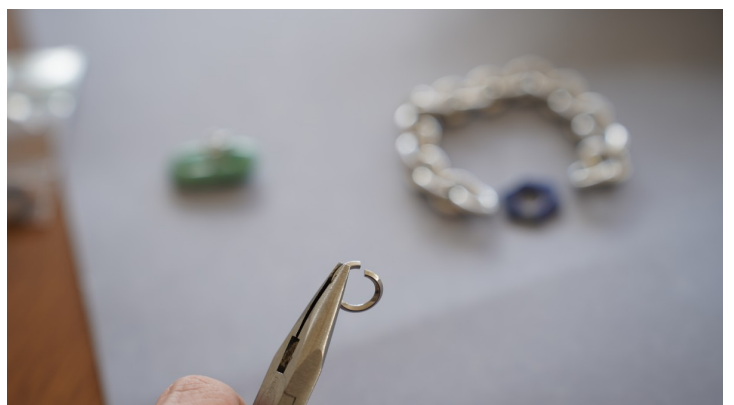
★ Step 13/23

And that's it! You've removed your link! Now you can place the lapis lazuli flower.



★ Step 14/23

Then open your rings using 2 pliers.



★ Step 15/23

Thread the first ring onto the flower.



★ Step 16/23

Ratchet it to the chain link.



★ Step 17/23

Do the same with the 2nd open ring, then attach it to the other end of the chain.



★ Step 18/23

You get this!



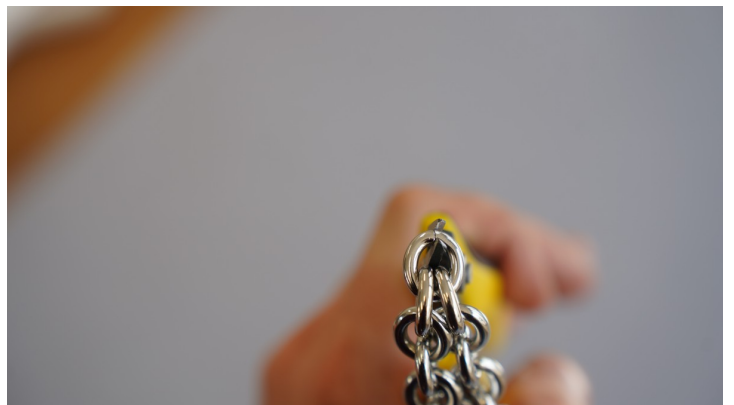
★ Step 19/23

Then check the size of your wrist and see if you need to adjust the length of the chain. As I have a small wrist, my chain is 14 cm long, without the flower or clasp. That's 18 links of chain. With the flower and clasp, the flat length is about 19 cm.



★ Step 20/23

We're going to place the clasp, so choose a ring opposite the flower to open it and place the clasp. You can adjust the length of the bracelet by removing several links if necessary. On mine, on either side of the clasp and flower, there are 9 links of chain. As in the previous step, use wire cutters and 2 large pliers to open it.



★ Step 21/23

This is what you get.



★ Step 22/23

As before, open 2 rings, pass the first ring through the clasp and chain link, and the second ring through the chain link.



★ Step 23/23

Once everything is attached, you get this!



Result

