

## PASTEL MOTHER-OF-PEARL BEADS NECKLACE

By : Pierre



Easy



30 minutes

*How to make a natural bead necklace easily?*

? Soft colors, mother-of-pearl beads... and a DIY necklace ?

Summer is slowly settling in, with its sunny days, light outfits and the desire to wear bright accessories. And what could be better than handmade jewelry to sublimates a summer look? This tutorial shows you how to create a **pastel pearly bead necklace** that's easy to make, soft to wear and perfect as a **beginner's jewelry**. The project combines tinted mother-of-pearl tube beads, fine gold plated rondelles and natural white pearls, all mounted on invisible nylon thread for a delicate, airy effect. Pastel colors, such as pink, lilac or turquoise, pair easily with all your outfits: flowing dress, camisole, cotton blouse or white T-shirt.

? This **DIY necklace** is designed for beginners: no need for complex materials or advanced techniques, just simple pliers! You'll learn how to string the beads in a harmonious order, secure the ends with cable-wire protectors, and attach a spring clasp.

It's a **handmade piece of summer jewelry** that you can personalize as you wish, and which will follow you wherever you go, whether on vacation, at a festival or at a terrace dinner party.

## Which material to use for Pastel mother-of-pearl beads necklace?

### SUPPLIES



8mm 304L Stainless Steel Spring Clasps -with closed ring Gold Tone x10  
Ref. : CLS-004-G10  
Quantity : 1



0.50mm Supplemax Monofilament illusion cord - Transparent x50 m  
Ref. : HIL-032  
Quantity : 1



2x2mm 316 Stainless Steel Crimp Tubes - Gold Tone x25  
Ref. : INX-340  
Quantity : 1



0.70mm 304 Stainless Steel Wire Guardians - Gold Tone x6  
Ref. : INX-364  
Quantity : 1



5x3mm Mother of Pearl Tube Beads - Natural x40cm  
Ref. : NA-736  
Quantity : 1



3.5x5mm Tinted mother-of-pearl tube beads - Multicolored x38cm  
Ref. : NA-872  
Quantity : 1



Natural White Shell Beads 3mm x25  
Ref. : SP-129  
Quantity : 1

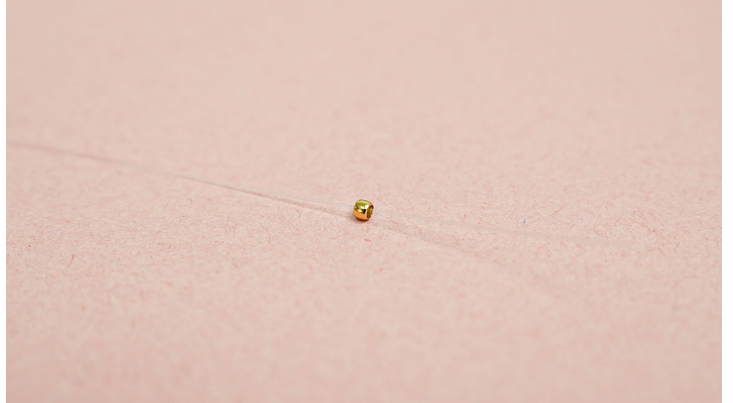


4mm 304L stainless steel spacer flower - Gold x10  
Ref. : STL-226  
Quantity : 2

## steps

### ★ Step 1/13

Cut 1 metre of wire and thread the bead tube to be crushed.



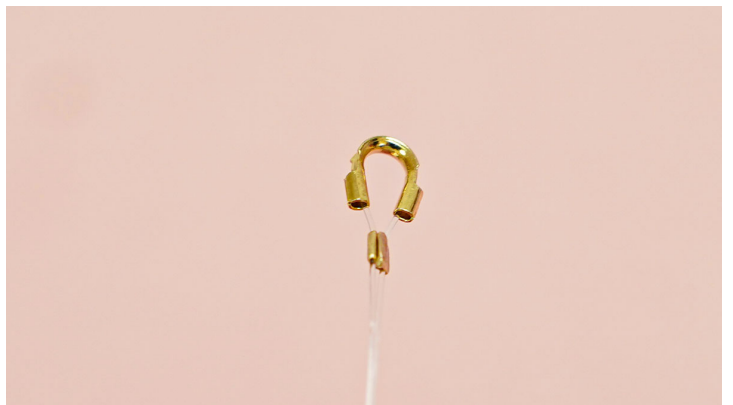
### ★ Step 2/13

Then thread the wire protector through the bead tube to be crushed.



### ★ Step 3/13

Crush the tube with a pair of crushing bead pliers or flat-nose pliers.



★ Step 4/13

String 7 pearly beads in any order.



★ Step 5/13

Once all 20 beads have been strung, add a rondelle, then a white mother-of-pearl bead, then a rondelle again.



★ Step 6/13

Continue as shown in the photo, 3 mother-of-pearl beads, a rondelle, a mother-of-pearl bead, a rondelle, 3 mother-of-pearl beads again, and so on. Once this sequence has been completed, add 3 round mother-of-pearl beads, then 3 rondelles, and 11 white mother-of-pearl tube beads.



★ Step 7/13

Do the same sequence in reverse, adding a tube bead at the end.



★ Step 8/13

The result is as follows.



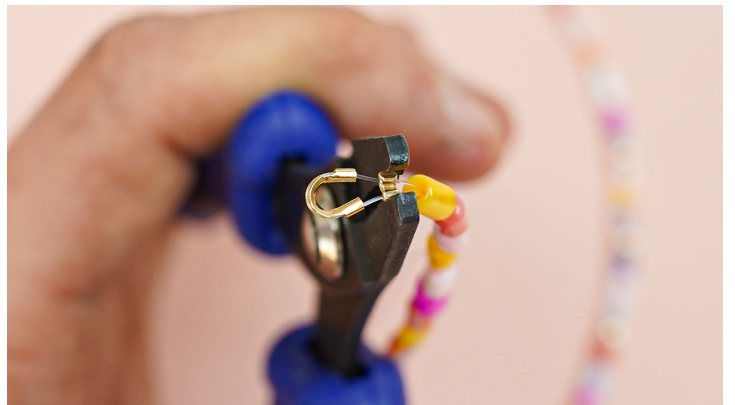
★ Step 9/13

Then add the wire-wrap protection and pass through your crush tube again, followed by a few beads as shown in the photo.



★ Step 10/13

As before, crush it a second time to block the thread.





★ Step 11/13

Once the wire is blocked, cut it.



★ Step 12/13

Add the Lobster Clasp with its open ring.



★ Step 13/13

Close the open ring of your clasp. Your necklace is finished!



## Result

