

BRICK STITCH WEAVING FLOWER EARRINGS

By : Jenny



Intermediate



3h30

How to weave pearl flower earrings?

To kick off the fast-approaching summer, we're craving springtime colors and shapes to slip into our jewelry box! This pretty pair of flower ear rings is ideal for the season, and will accompany your everyday outfits as well as more festive outfits. Why not wear them to a wedding, for example? In this tutorial by Jenny, you'll learn how to create these flower earrings using Brick Stitch weaving. This needle-bead weaving technique involves stringing seed beads in rows next to each other. This creation is accessible to people with an intermediate level of weaving and takes around 3h30 to complete.

This tutorial is part of our Perlement Vôte DIY jewelry collection . It's a special collection, since each of the creations was imagined and created by the winners of our Cré'Academy competition. You'll find five tutorials in pastel colors tinged with pink, peach and yellow. As you can see, these are the ideal creations for the summer ahead!

To weave the petals of your flowers, you'll need 4 references of Miyuki Delica 11/0 beads and one reference of Miyuki Duracoat 15/0 seed beads. To make the pistil of each flower, you'll need round faceted Preciosa beads and Czech glass beads, all to be assembled and glued onto a pair of stud earrings.

These earrings can be customized to suit your choice of bead colors. We have a wide choice of Miyuki beads on our website, so you can reproduce these flowers in the shades of your choice!

If you reproduce this tutorial, don't hesitate to share your jewelry on the networks by tagging our Facebook or Instagram page. We'd love to see what you come up with!

Which material to use for Brick Stitch weaving flower earrings?

SUPPLIES



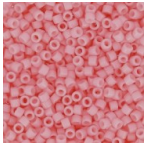
Miyuki Delica Duracoat 11/0 DB1832 - Galvanized Gold
Ref. : DB-1832
Quantity : 1



Miyuki Delica 11/0 DB2033 - Luminous Creamsicle x8g
Ref. : DB-2033
Quantity : 1



Miyuki Delica 11/0 DB2101 - Duracoat Opaque Light Lemon Ice
Ref. : DB-2101
Quantity : 1



Miyuki Delica 11/0 DB2116 - Duracoat Opaque Light Carnation x8g
Ref. : DB-2116
Quantity : 1



Pad earstuds 10 mm for DIY jewelry creation fine Gold plated x2
Ref. : EAR-153
Quantity : 1



Miyuki Seed beads Duracoat 15/0 4202 - Galvanized Gold x8g
Ref. : MR15/4202
Quantity : 1



4mm Preciosa round faceted beads - Round Bead - Crystal Aurum Full x20
Ref. : PCC-846
Quantity : 1



Round beads Shiny 4mm Peach Coral x50
Ref. : RVC-416
Quantity : 1

SUPPLIES



Miyuki Beading needles x6
Ref. : OAC-162
Quantity : 1



Decopatch glossy glue Varnish x 70 g
Ref. : OTL-523
Quantity : 1



Snipper Tool / Thread Snips for sewinf and embroidery - 10.5 cm x1
Ref. : TECH-425
Quantity : 1

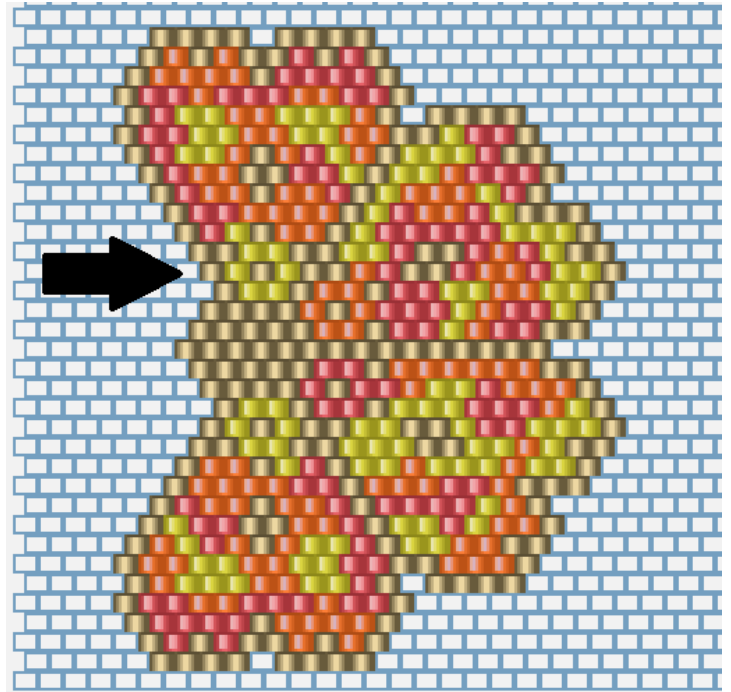


Miyuki Nylon Beading thread B 0.25 mm Gold x50 m
Ref. : UFC-497
Quantity : 1

steps

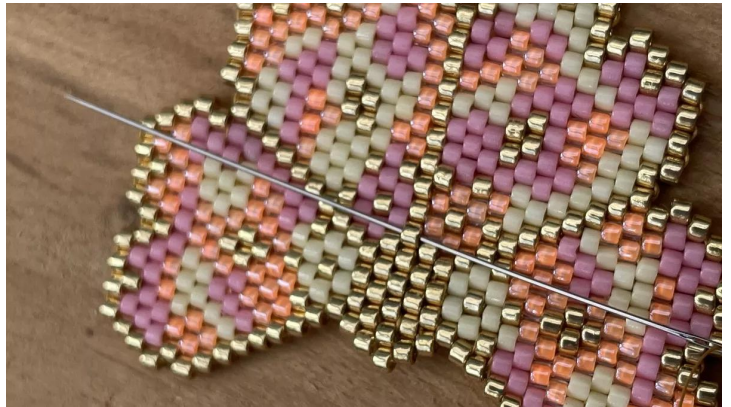
★ Step 1/35

Weave the diagram below 2 times in Brick Stitch, starting where the arrow is.



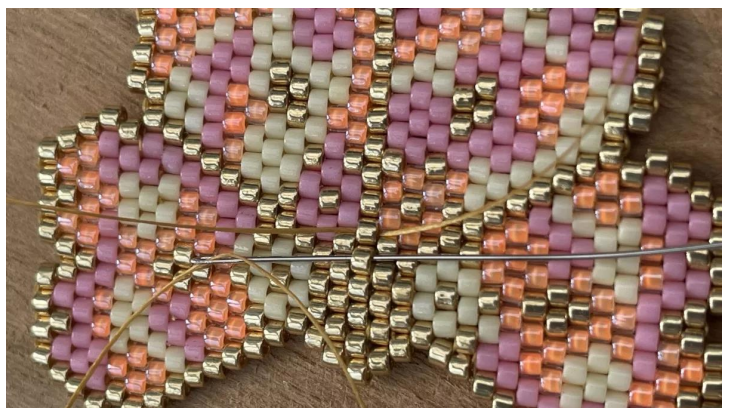
★ Step 2/35

Take about 1m of thread. Pass the needle through the gold bead of the weave as shown in the photo, leaving 10cm of thread.



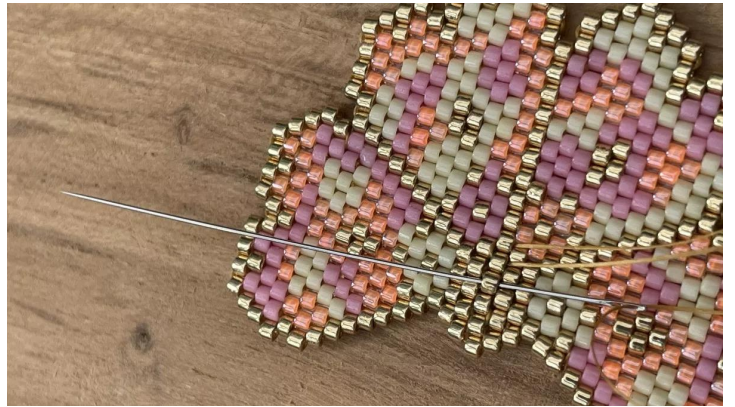
★ Step 3/35

Stitch into the left bead from above as shown in the photo.



★ Step 4/35

Stitch into the left bead from below (see photo)



★ Step 5/35

prick into the right bead from above (see photo)



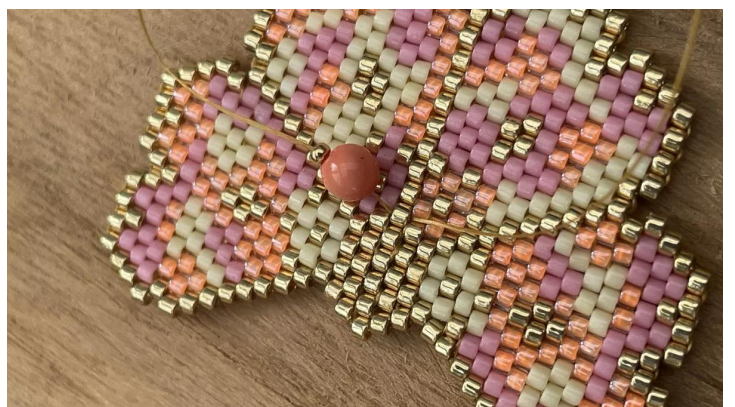
★ Step 6/35

Stitch into the right-hand bead from below (see photo)



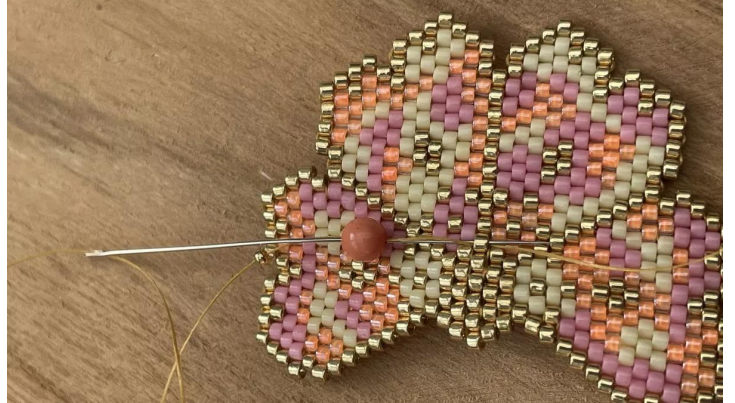
★ Step 7/35

threading a peach bead (P) and a seed bead (ROC)



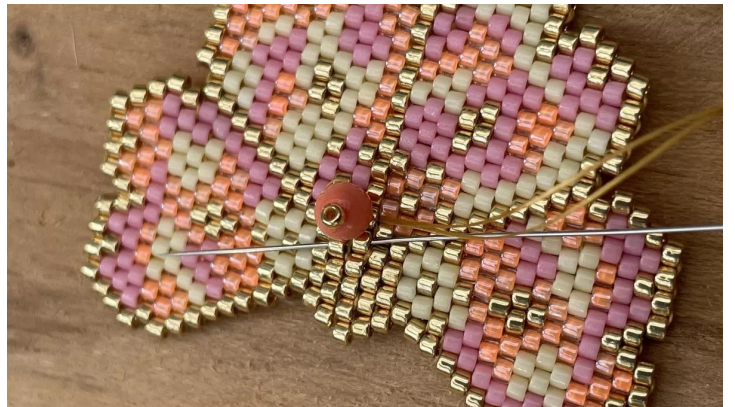
★ Step 8/35

Stitch into the peach bead (P), then into the weave (see photo). Tighten to place the pearl straight on the weave.



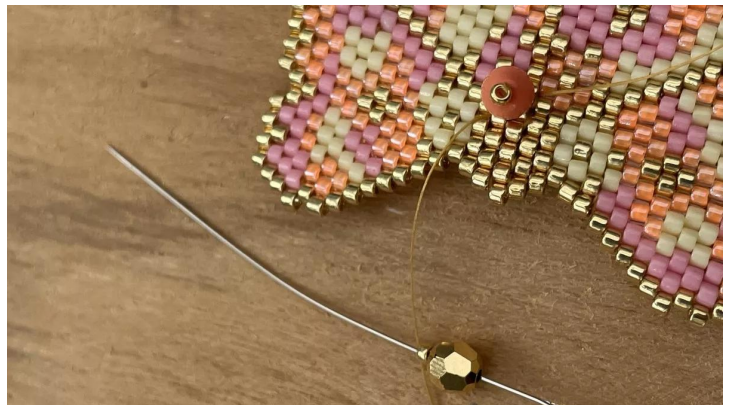
★ Step 9/35

Insert the needle into the weave in the 2 diagonal left-hand delicas (see photo).



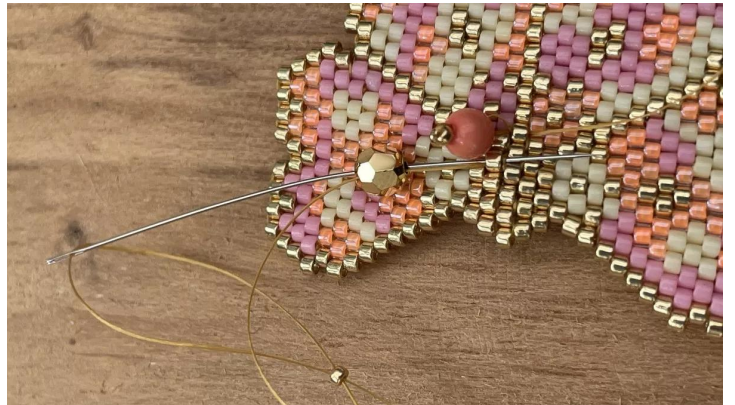
★ Step 10/35

thread a golden pearl (D) and a rocaille (ROC)



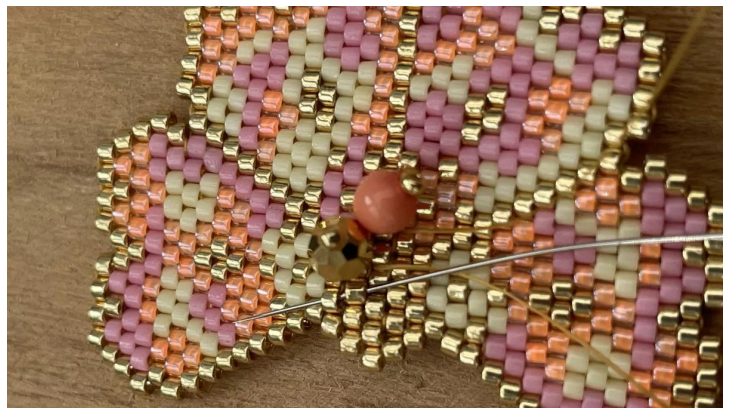
★ Step 11/35

transplant into the (D) then into the weave (see photo)



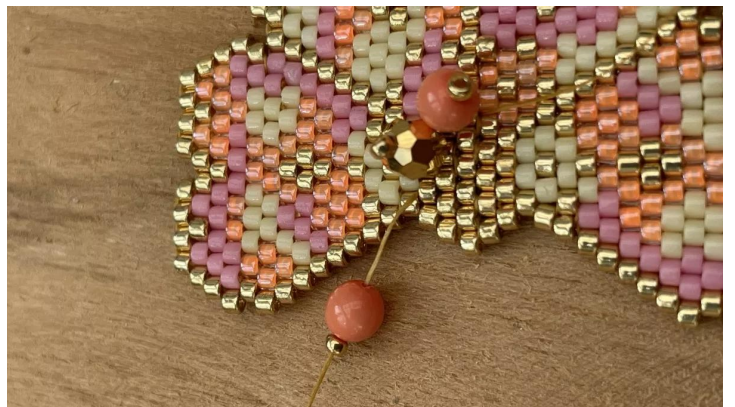
★ Step 12/35

Stitch into the weave in the 2 diagonal left-hand delicas (see photo)



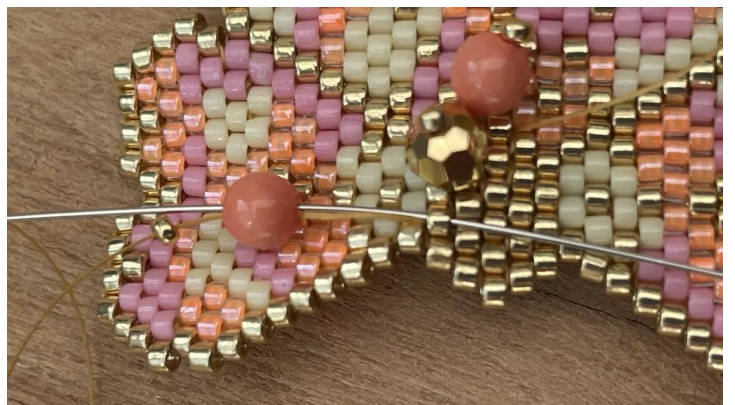
★ Step 13/35

thread one (P) and one (ROC)



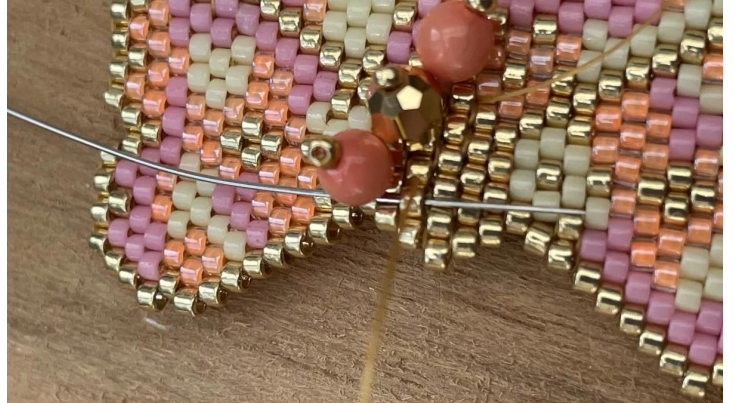
★ Step 14/35

transplant into the (P) then into the weave (see photo)



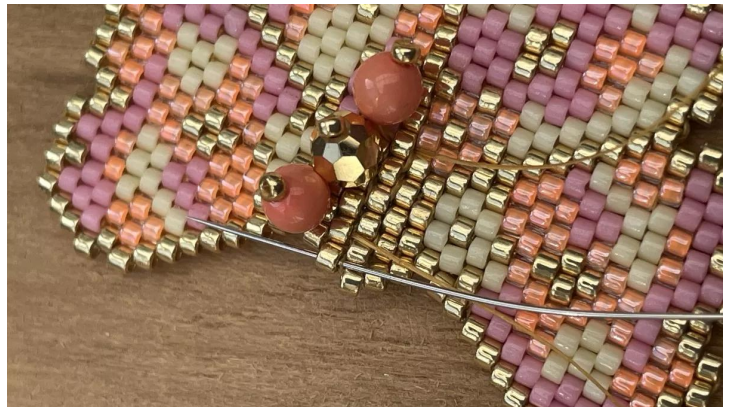
★ Step 15/35

prick the needle into the delicate weave (see photo)



★ Step 16/35

transplant into the left delica from below (see photo)



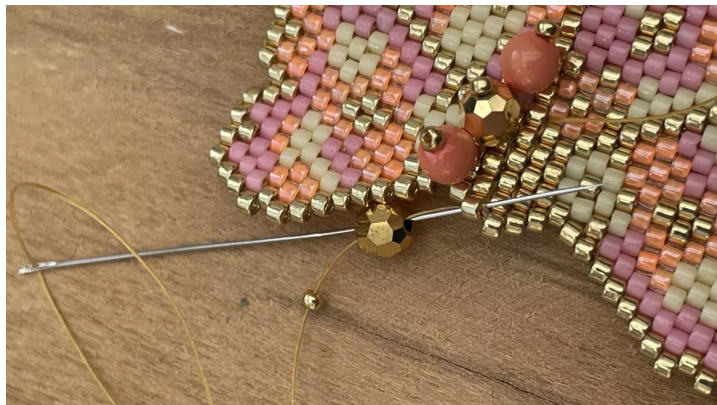
★ Step 17/35

thread one (D) and one (ROC)



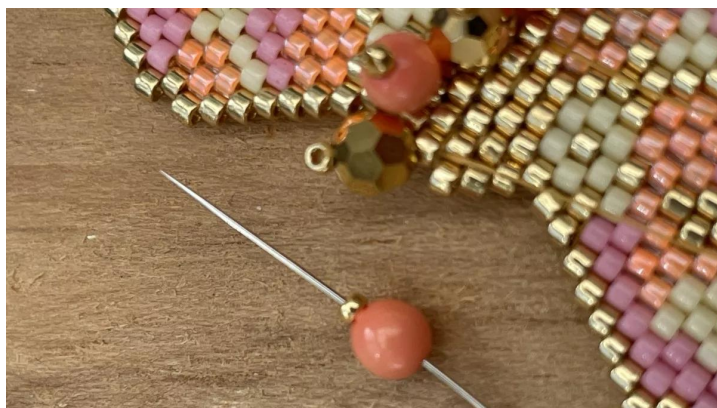
★ Step 18/35

transplant into the (D) then into the weave (see photo)



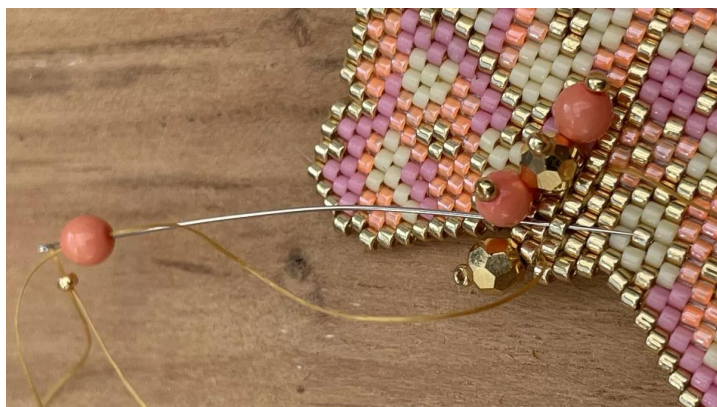
★ Step 19/35

thread one (P) and one (ROC)



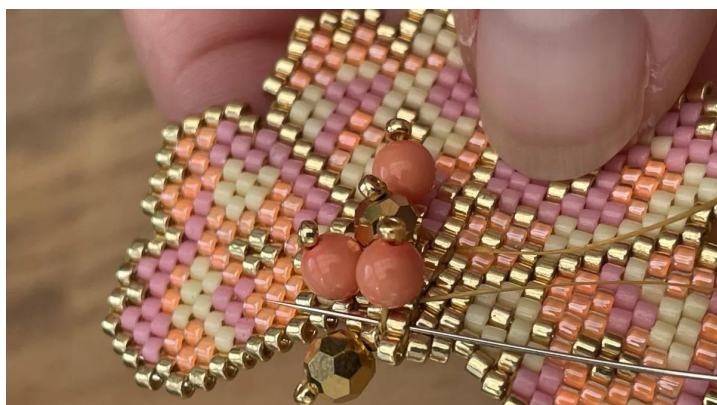
★ Step 20/35

prick into the (P) and prick into the delicate weave (see photo)



★ Step 21/35

stitch in the delicate weave on the left (see photo)



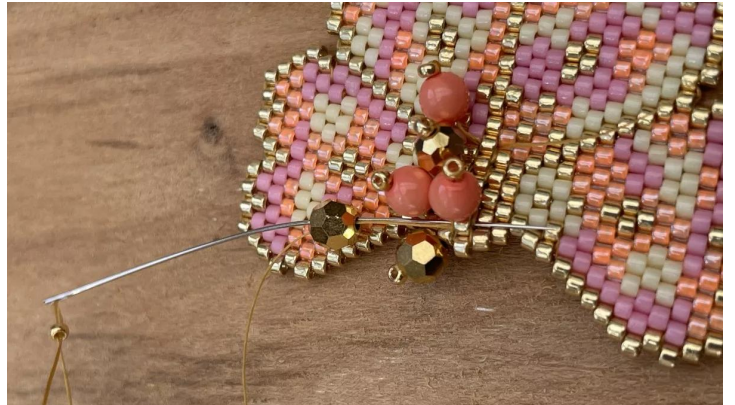
★ Step 22/35

thread one (D) and one (ROC)



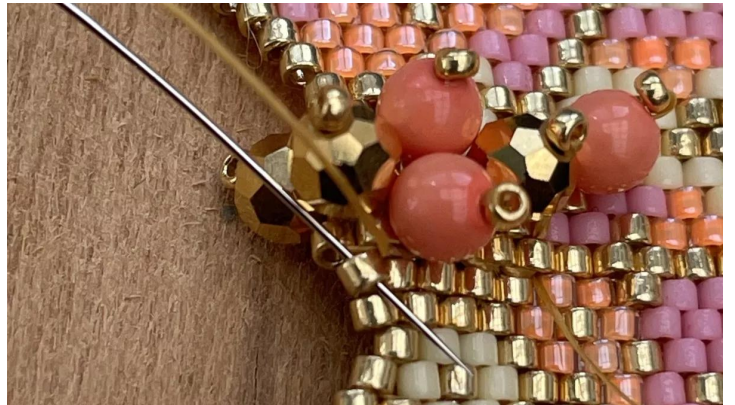
★ Step 23/35

Press into (D) and then into weave as shown



★ Step 24/35

prick into the Délica below as shown



★ Step 25/35

Thread one (P) and one (ROC)



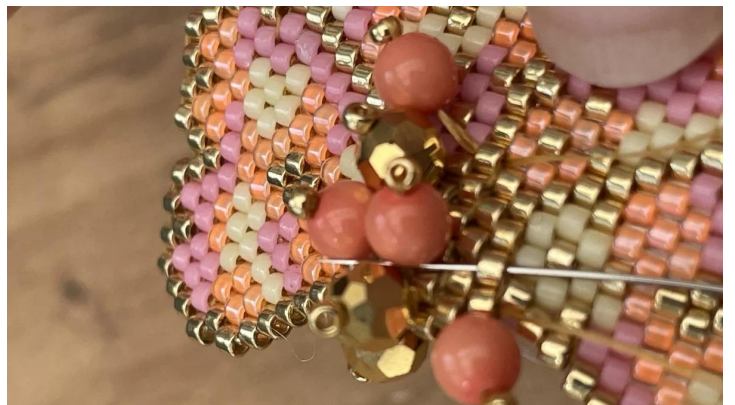
★ Step 26/35

Transplant into the (P) and then into the weave (see photo) (delicate below)



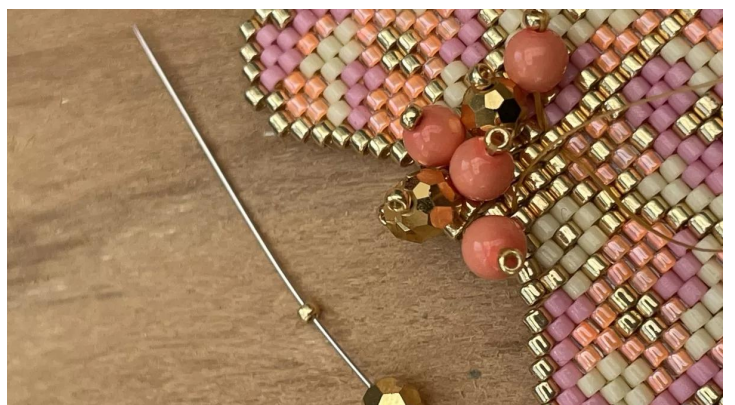
★ Step 27/35

prick into the right delica from below (see photo)



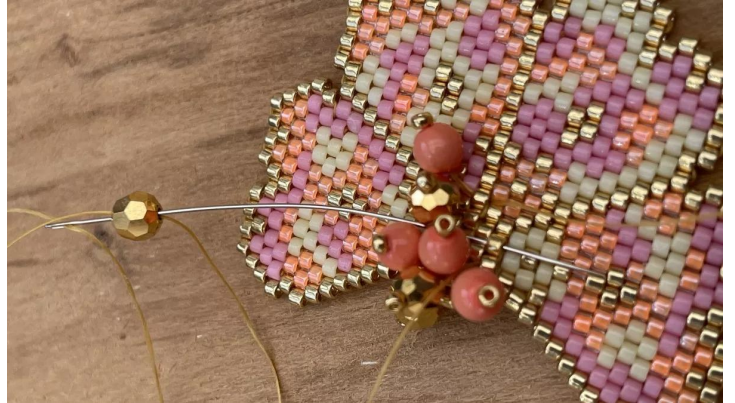
★ Step 28/35

thread one (D) and one (ROC)



★ Step 29/35

Transplant into the (D) then into the weave (see photo)



★ Step 30/35

prick into the 2 delicas diagonally (see photo)



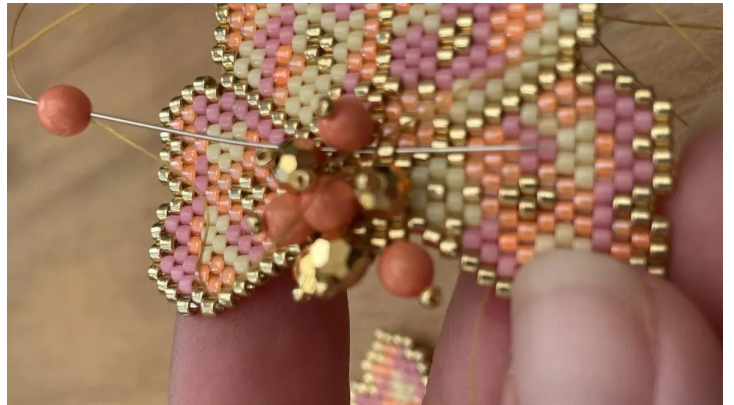
★ Step 31/35

thread one (P) and one (ROC)



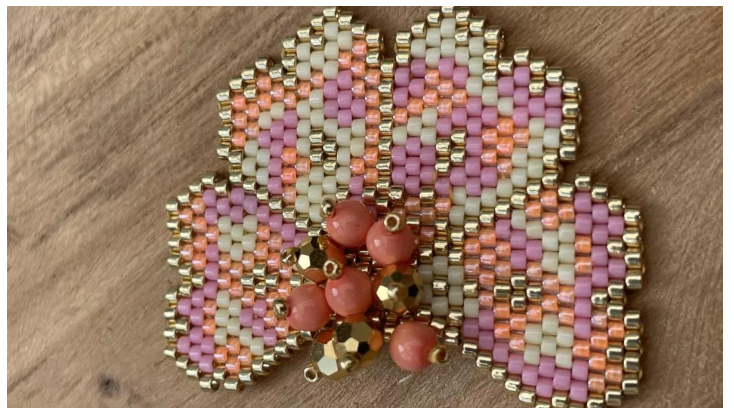
★ Step 32/35

transplant into the (P) then into the weave (see photo)



★ Step 33/35

Pass the threads through the weave to close and consolidate, then cut the threads flush.



★ Step 34/35

OPTIONAL: You can apply a coat of decopatch varnish to the back of each weave to solidify it. If you don't have any, a coat of clear nail varnish will do the trick. Be careful to apply a thin layer.

★
Step 35/35

Once the varnish is dry, glue the ear stud in the same direction as shown in the photo. This way, the earrings can be worn in 2 different directions.



Result

