

NECKLACE WITH BRAIDED CORDS AND EPOXY PENDANTS

By : Carla Perles&Co



Easy



5 minutes

How to close a cord necklace?

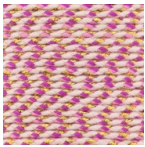
Braided cord is a cord that tends to fray. To make it easier to thread the beads, we used a soft split needle, specially designed for beading. You'll also find more tips for stringing [beads on a fraying cord](#) on our technical datasheet.

Which material to use for Necklace with braided cords and epoxy pendants?

SUPPLIES



21x12mm Rectangle pendant with epoxy resin - Fine Gold Plated - White x1
Ref. : COL-751
Quantity : 1



1.5mm Braided cotton cord and metallic thread - Light pink - Plum - Gold x1m
Ref. : CRD-449
Quantity : 1



5x4mm Flattened Striated Round Beads - Fine Gold plated x10
Ref. : ETA-245
Quantity : 1



Lace holder clasp 1.5mm fine Gold plated
Ref. : FRM-131
Quantity : 1



6mm Flower pattern rondelle beads - Fine Gold Plated x10
Ref. : LTZ-446
Quantity : 1

SUPPLIES



Stainless Steel beading needle variety pack x4
Ref. : ACC-935
Quantity : 1



13cm Long nose flat nose pliers with spring By Perles & Co - Mint x1
Ref. : ATT-836
Quantity : 1



13cm Round long nose pliers with spring By Perles & Co - Mint x1
Ref. : ATT-837
Quantity : 1

steps

★ Step 1/5

Cut your cord to the desired length. Here, 37cm. Don't forget to take into account the 3cm clasp depending on the desired length of your necklace.



★ Step 2/5

Take one side of the lace clasp and close it over the cord: place the end of the cord in the lace clasp and hold it in place with a pair of pliers. For a better hold, let the cord protrude slightly to hold it with the pliers.



★ Step 3/5

With the other hand, take a pair of flat-nose pliers and fold the sides together.



★ Step 4/5

Then take your beads: 4 round flower beads, 2 round beads and 1 pendant. Slide the beads into the cord. Use a beading needle if necessary. It'll be easier if the cord unravels. Pass the cord through the needle, then the needle with the cord through the bead.



★ Step 5/5

Thread in the following order: a round flower pearl, a round pearl, a round flower pearl, the pendant, a round pearl, a round pearl and a final round pearl. To finish your necklace, close the second clasp on the cord as in steps 2 and 3.



Result