

# MIYUKI TRIANGULAR EARRINGS IN TRIPLE BRICK STITCH

By : Tiffanie Perles&Co



Intermediate



3h

### *How to make triple brick stitch?*

In this new tutorial, you'll learn how to make Miyuki pearl ear rings using the triple brick stitch technique.

The Brick Stitch weaving technique comes in several variants: single brick stitch, double brick stitch and triple brick stitch. Double and triple brick stitch use exactly the same technique as single brick stitch. The only difference is the number of beads strung at a time. For triple brick stitch, instead of 1 bead, 3 are threaded. Just think of 3 beads as a single bead. For double brick stitch, instead of 1 bead, 2 are threaded. There's no need for a loom: triple brick stitch, like single and double, is done with a weaving needle.

These dangling ear rings are from the limited edition Mystic Galaxy kit released in 2019. You can combine them with a [bangle bracelet](#) to create a matching jewelry set.

You can try out different brickstitch techniques by taking inspiration from our tutorials :

- Tuto [fringe earrings](#) in double brick stitch.
- [Pearl dangle ear](#) rings tutorial with single, double and triple brick stitch.

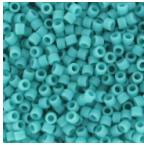
We can't wait to see the results of all your creations, so don't hesitate to share them with us on our social networks by tagging us @perlesandco or using #perlesandco! Join our Facebook group, the Super Club des Client(e)s Perles & Co, to discover our creative community.

## Which material to use for Miyuki triangular earrings in triple Brick Stitch?

### SUPPLIES



Ball Earwires 18mm Gilded with fine 24K x6  
Ref. : BO-142  
Quantity : 1



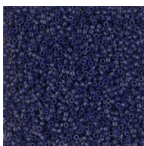
Miyuki Delica 11/0 DB0759 - Matte Opaque Turquoise Green  
Ref. : DB-0759  
Quantity : 1



Miyuki Delica 11/0 DB1523 - Opaque Light Salmon AB Mat  
Ref. : DB-1523  
Quantity : 1



Miyuki Delica Duracoat 11/0 DB1832 - Galvanized Gold  
Ref. : DB-1832  
Quantity : 1



Miyuki Delica Duracoat 11/0 DB2144 - Opaque Dyed Cobalt x8g  
Ref. : DB-2144  
Quantity : 1



Gold-filled closed jumprings 2.8x0.65 mm x10  
Ref. : GLD-417  
Quantity : 1



Sequin/charm with fine hammered effect - Triangle 35x13.5 mm - Gold Tone x2  
Ref. : PEND-692  
Quantity : 1



Miyuki Nylon Beading thread B 0.25 mm Gold x50 m  
Ref. : UFC-497  
Quantity : 1

### SUPPLIES

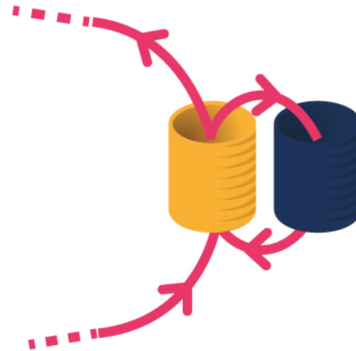


Miyuki Beading needles x6  
Ref. : OAC-162  
Quantity : 1

## steps

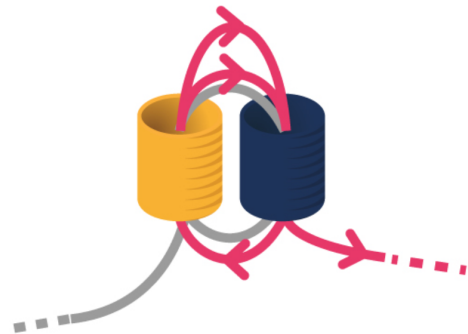
### ★ Step 1/9

Cut 1.20 m of thread and thread 1 gold bead and 1 navy blue bead. Thread the needle through the gold bead to form a loop between the two beads.



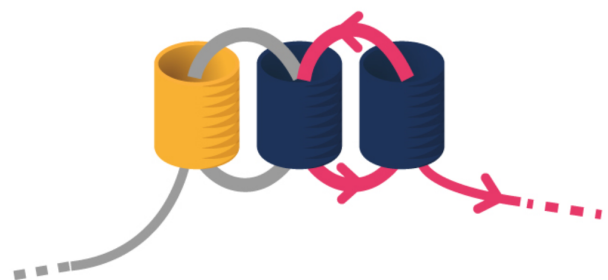
### ★ Step 2/9

Return to the navy blue bead, then the gold bead, then the navy blue bead one last time.



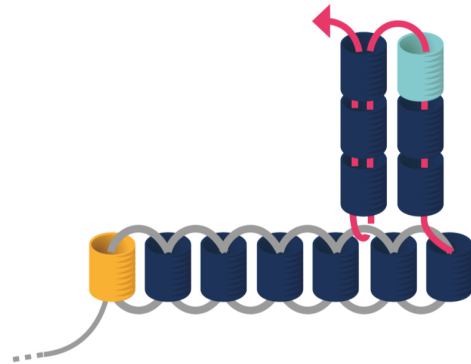
### ★ Step 3/9

String 1 navy blue bead and go through the previous navy blue bead and back through the last one and do a 2nd round. Weave in the remaining 4 blue beads in the row by repeating step 3.



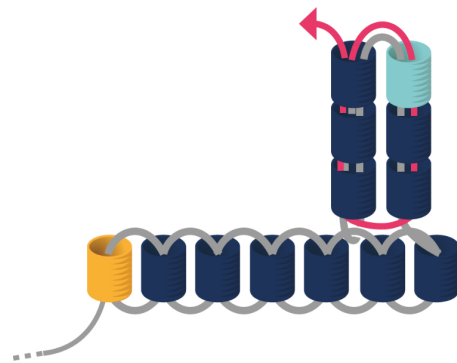
★ Step 4/9

String 2 navy blue beads, 1 turquoise bead and 3 navy blue beads. Thread the needle under the thread connecting the second to last and second to last navy blue beads woven in the previous step. Return to the last 3 navy blue beads strung.



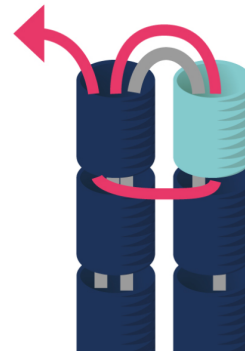
★ Step 5/9

Go through the first 3 and back through the last 3 to clamp the bead columns together.



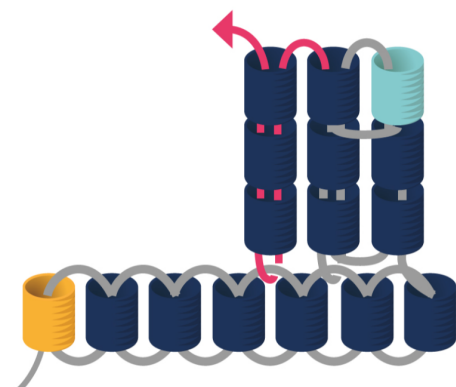
★ Step 6/9

The technique is similar to the classic Brick Stitch, but the more beads you add, the easier it is for the bead columns to separate. To bring them together, you can make a loop between the two top beads to bring them closer together.



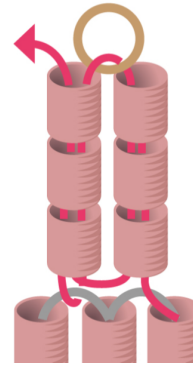
★ Step 7/9

Then weave in the remaining beads 3 by 3 following the pattern. For each row change, repeat steps 4 to 6.



★ Step 8/9

Once you reach the last row, string 3 pink beads, the closed ring, 3 pink beads and weave them. Make sure the ring is in the center. Turn in the first 3 beads, the ring, the last 3 beads, the ring and the first 3 beads to solidify the weave and attachment. Then wedge the thread into the beads and cut it.



★ Step 9/9

Open the ear hook ring by twisting the end, not by pulling it apart with pliers. Slip the closed ring and the triangle pendant into it. Pay attention to the direction so that the weave is in front of the gold pendant when you wear the earrings. Make the second pair.



Result