

ELEGANT NECKLACE WITH PURECRYSTAL PEARLS, MINI DROPS AND TOHO ROCKERY

By : Elphy Design



Easy



4h

How to weave pearls to make an elegant necklace?

Are you a beginner? Fear not, Martine, the blog ["Les perles d'Elina"](#) has taken you an ideal step by step to learn about the wonderful world of pearl weaving and we bet you will quickly get a taste for it! In this tutorial, you will make a necklace (inspired by the creation of the artist [Martine Perles](#)) with seed pearls, pearls, and pearls. At the bottom of the page, you will find photos of other color associations... it's up to you to choose your preferred version! If you have caught the pearl virus, take a look at our other [tutorials for making custom pearls with glass beads](#).

Advice from the designer:

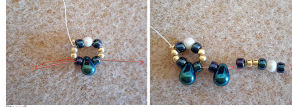
- Be sure to tighten your work.
- The measures presented in this tutorial are for a necklace measuring 43 cm with the clasp applied. Be sure to adjust the length according to your neck size.

Step 1
Take about 2 m of wire but leave a tail of about 15 cm. Thread a 15/0 seed bead to make a stopper bead and tie it. It will then be used to install the clasp, then thread 2 seed beads 11/0, 1 seed pearl 8/0, 1 mini-drop, 1 seed pearl 8/0, 2 seed beads 11/0, 1 pearl seed 8/0, 1 pearl pearl 3 mm, 1 seed pearl 8/0, iron in the 2 seed beads 11/0.



Step 2

Iron the thread in the 8/0 seed bead, the mini-drop and the 8/0 seed bead. Then put on again 1 seed pearl 8/0, 1 mini-drop, 1 seed pearl 8/0, 2 seed beads 11/0, 1 seed pearl 8/0, 1 pearl pearl 3 mm and 1 pearl of seed 8/0.



Step 3
Now again in the seed pearl 8/0, the mini-drop and the other seed pearl 8/0 then repeat the circles (as in the photos below) and so on to obtain 56 circles or 43 cm clasp understood.
(or 60 circles if you have a stronger neck or 46 cm of collar).
Your necklace begins to be born under your finger!



Step 4

Thread a seed pearl 15/0, a pearl of 3 mm, 3 seed beads 15/0, the clasp ring then 3 seed beads 15/0, a pearl of 3 mm and a seed pearl 15/0 then go through the 2 seed beads 11/0 from a second time around the clasp to strengthen your work. It will again take 2 m of wire. Pass your thread in the seed pearl 8/0, then in the pearl 3 mm, in the seed pearl 8/0 and iron the thread in the 2 seed beads 11/0.



Step 5

Thread 2 seed beads 15/0, a pearl of 4 mm, a seed pearl 15/0.
Be sure to place the beads correctly during work. Iron your thread in the pearl pearl 4 mm, the 2 seed beads 15/0 and the 2 seed beads 11/0. Pull the thread to place the beads in the continuity of the 11/0 seed beads and in relief.

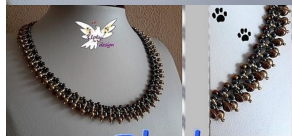


Step 6

Iron in the seed pearl 8/0, the pearl pearl 3 mm, the seed pearl 8/0 then in the 2 seed beads 11/0. We start again as for step 5 and this, always on the same side of the work until arriving at the other end. Afterwards, place the second piece of the clasp in the same way as seen previously but passing the needle opposite to the magnet.
Remember to cut the last seed pearl 11/0 (last pearl threaded at the beginning) to bring us to 2 and cross your left-hand threads in the weaving.



Now you are! You have two necklaces in one: on one side, the round beads will be put forward more and in the opposite direction, these will be the drops!
So which side will you choose? Round side or drop side?



We will be delighted to see your creation of this necklace! Quickly send us photos of your creation on Facebook or by email!

Which material to use for Elegant necklace with PureCrystal pearls, mini drops and Toho rockery?

SUPPLIES



PureCrystal 5810 Pearls 3mm Pearlescent White Pearl x20
Ref. : 5810_03/55
Quantity : 3



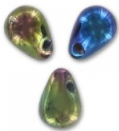
PureCrystal 5810 Pearls 4mm Pearlescent White Pearl x20
Ref. : 5810_04/65
Quantity : 3



Fireline Thread - Fused Braid 0.12 mm (6LB) Crystal x50 m
Ref. : FCU-956
Quantity : 1



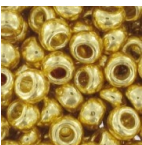
Magnetic clasp with strass 11mm Gold tone
Ref. : FRM-193
Quantity : 1



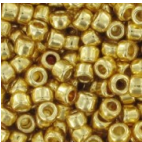
Mini-Drops 4x6 mm Green Iris x50
Ref. : GTT-183
Quantity : 2



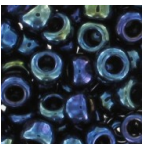
John James Beading needle Size 12 51 mm x25
Ref. : OAC-095
Quantity : 1



Toho seed beads 11/0 TO11RPF557 - PF Galvanized Starlight
Ref. : TO11R-PF557
Quantity : 1



Toho Seed beads 15/0 TO15RPF557 - PF Galvanized Starlight x8g
Ref. : TO15R-PF557
Quantity : 1



Toho seed beads 8/0 TO8R0088 - Metallic Cosmos x8g
Ref. : TO8R-0088
Quantity : 1

Result