

MIYUKI WEAVING BRACELET MISSISSIPPI TURQUOISE

By : Tiffanie Perles&Co



Intermediate



8h

How to weave Mississippi?

What is the Mississippi weave ?

The Mississippi weave is a Peyote weave + herringbone weave. The herringbone weave allows to create one or more angles to the weave. We obtain a herringbone or arrow weave. This weaving can be used to make bracelets with clasps or bangles/jigs without clasps. We had already presented this technique in video for two other models of bracelets. Don't hesitate to have a look at it:

- Bangle bracelet weaving Miyuki Mississippi copper and brown
- Miyuki Weaving Bracelet Arrows or Chevrons

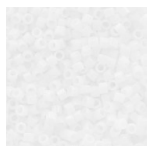
The weaving starts like a Peyote weaving. We thread the first two rows of beads. Then we continue in Odd Peyote. However, at the corner, here in the center, you will have to add 2 beads instead of 1 in peyote and not "skip" any bead for the addition. This will create the angle in the center. On each side of this angle, we have a peyote weave that is on the bias.

Which material to use for Miyuki weaving bracelet Mississippi turquoise?

SUPPLIES



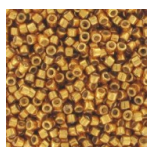
4X0.6mm Open Jump Rings - European-made -fine Gold plated x50
Ref. : ACC-362
Quantity : 1



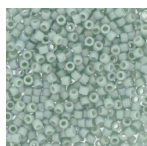
Miyuki Delica 11/0 DB0200 - Opaque White
Ref. : DB-0200
Quantity : 1



Miyuki Delica 11/0 DB0793 - Opaque Turquoise Green Dyed Semi Mat x8g
Ref. : DB-0793
Quantity : 1



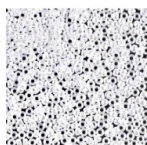
Miyuki Delica Duracoat 11/0 DB1833 - Galvanized Yellow Gold
Ref. : DB-1833
Quantity : 1



Miyuki Delica Duracoat 11/0 DB2356 - Opaque Dyed Pale Turquoise x8g
Ref. : DB-2356
Quantity : 1



Gold filled spring clasp 8mm with open ring
Ref. : FRM-363
Quantity : 1



Miyuki Seed beads 15/0 420 - Opaque White Pearl Ceylon
Ref. : MR15/420
Quantity : 1



Miyuki Nylon Beading thread B 0.25 mm Blush x50 m
Ref. : UFC-496
Quantity : 1

SUPPLIES



Miyuki Beading needles x6
Ref. : OAC-162
Quantity : 1



Kit of 3 pliers in Perles & Co pocket Pink x1
Ref. : OUT-335
Quantity : 1



Snipper Tool / Thread Snips for sewinf and embroidery - 10.5 cm x1
Ref. : TECH-425
Quantity : 1

steps

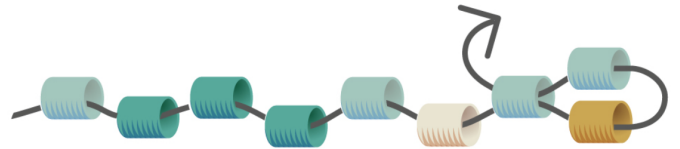
★ Step 1/12

Cut a 1.5 m thread, thread it onto a needle and string the following beads.



★ Step 2/12

Start the peyote weave by threading a pale turquoise bead and passing through the bead as shown in the diagram.



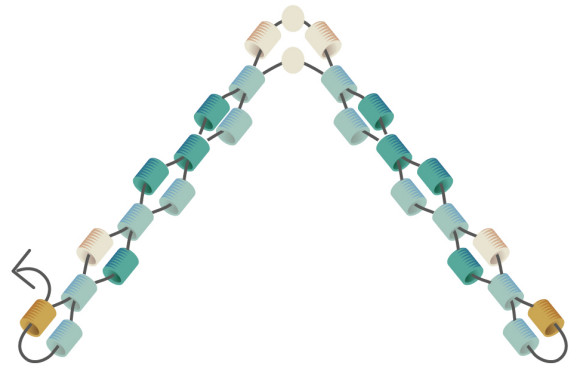
★ Step 3/12

Continue the Peyote weave, then between the two pale turquoise beads in the center, add a 15/0 seed bead. If you have decided not to use 15/0 seed beads, then weave directly into the two pale turquoise beads without adding any beads.



★ Step 4/12

Continue to follow the weaving pattern and come out of the golden bead shown in the diagram.



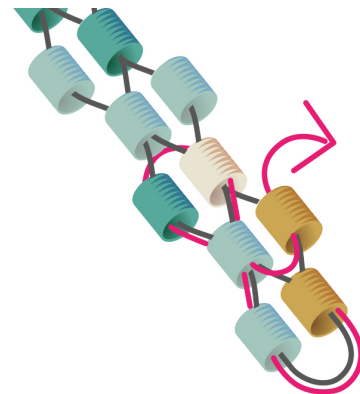
★ Step 5/12

Weave the new row. In the centre, add 1 pale turquoise bead, 1 seed bead 15/0 and 1 pale turquoise bead.



★ Step 6/12

On the right, go through the indicated beads to turn around and place yourself in the right direction and in the right bead to continue weaving. From now on, you will need to turn around in the beads on each side with each new row. Continue to follow the pattern and stop weaving when the bracelet is approximately around your wrist.



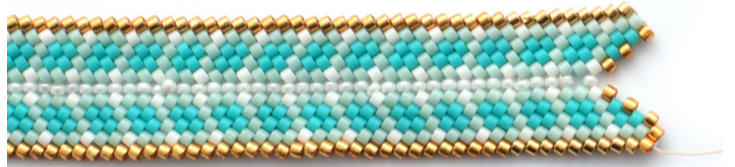
★ Step 7/12

To finish, not the tip but the other end of the bracelet, add 1 row of gold beads and add a seed bead between the two center beads if there is none. The picture does not show exactly the same beads as on the beginning of the diagram.



★ Step 8/12

Add 2 golden Brick stitch beads on top.



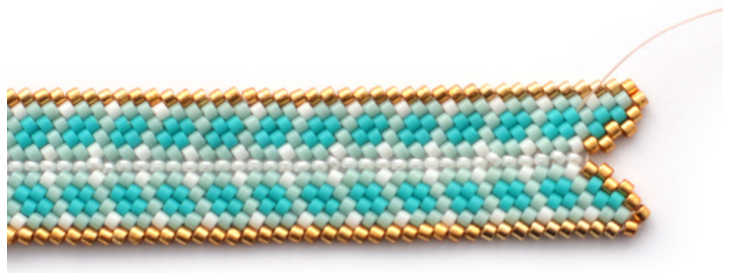
★ Step 9/12

Make a second row of gold beads and connect the two gold beads from the previous row to the center.



★ Step 10/12

Add 2 golden Brick stitch beads on the other top. Catch the thread in the weave and cut it.



★ Step 11/12

Add a thin ring like this.



★ Step 12/12

Also finish the other side with two strands of gold beads and a gold top bead. Put a ring through this bead and add a clasp.



Result