

MULTI STRANDS LONG NECKLACE WITH BLUE AND TURQUOISE MIYUKI SEED BEADS

By : Tiffanie Perles&Co



Intermediate



12h

With this tutorial, you will make a multi-row necklace inspired by African seed beads necklaces. This adaptation uses stainless steel weaving tips that can also be used as a bracelet. Simply adapt the length of the different strands of beads to the size of your wrist. To do this, choose only a part of the pearl strands.

This necklace is a bit long to make, about 12 hours on average. We advise you to make it in several times and to weave it flat on a clear table because it is very easy to roll up the strands and to get mixed up in the stringing of pearls. You can of course make it shorter by putting fewer beads. Just make sure to keep the same height on both sides and keep the "U" in the centre as it is.

These tips are very resistant to wear and oxidation as they are made of stainless steel. There are also gold-plated stainless steel weave tips in sets of 4 elements and sets of 2 elements.

You can make this necklace with any size seed beads equivalent to the 11/0 Miyuki seed beads, also in 11/0 delicas, by adding mini-hematite beads or small gemstone beads. Let your imagination run wild!

In the rest of the tutorial, the bead sequences will be noted:

- MR11/4703 Opaque Glazed Bayberry Mat AB: A
- MR11/2026 Opaque Pale Blue Gray Mat : B
- MR11/4702 Opaque Glazed Peacock Mat AB : C
- MR11/4282 Dyed Indigo Navy Blue Silver Lined : D

Which material to use for Multi strands long necklace with blue and turquoise miyuki seed beads?

SUPPLIES



Stainless steel Set of end caps & chevron connectors for Miyuki x1
Ref. : ACC-810
Quantity : 1



Fireline braided Nylon thread 0.12 mm (6LB) Crystal x45 m
Ref. : BRF-116
Quantity : 1



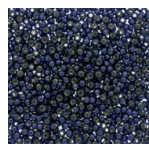
2.1mm Stainless Steel 316L Rectangle cable mesh chain x1m
Ref. : CHR-464
Quantity : 1



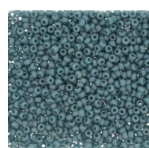
Stainless steel 304 Toggle clasp 16 mm x1
Ref. : FRM-773
Quantity : 1



Miyuki Seed beads 11/0 2026 - Mat Opaque Pale Blue Gray x8g
Ref. : MR11/2026
Quantity : 2



Miyuki Duracoat seed beads 11/0 4282- Dyed Indigo Navy Blue Silver Lined x8g
Ref. : MR11/4282
Quantity : 2



Miyuki Seed beads 11/0 4702 - Opaque Glazed Peacock Mat AB x8g
Ref. : MR11/4702
Quantity : 3



Miyuki Seed beads 11/0 4703 - Opaque Glazed Bayberry Mat AB x8g
Ref. : MR11/4703
Quantity : 3



Jumprings open 5x0.7mm 304 Stainless steel x50
Ref. : OAC-581
Quantity : 1

SUPPLIES

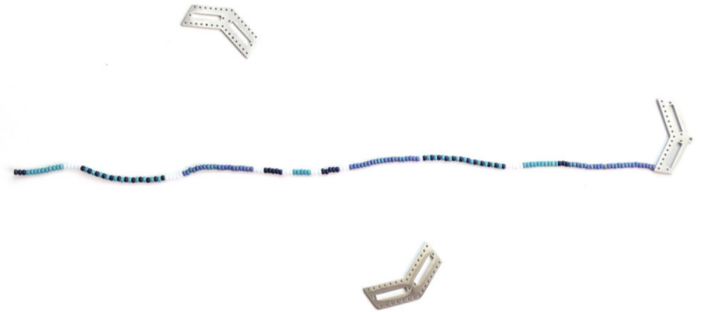


John James Beading needle Size 10 32,5x0,53 mm x20
Ref. : ACC-201
Quantity : 1

steps

★ Step 1/8

Cut about 2.5 m of nylon thread. Tie the end at the first hole with a double knot. Leave 10 cm of thread. Pass the other end through a needle. Thread the following string of beads: 25A, 3D, 10C, 5B, 11x (1D+1C), 1D, 1B, 20A, 3B, 5D, 3B, 5C, 3B, 5D, 3B, 20A, 5B, 11x (1D+1C), 1D, 5B, 10C, 3D. Print it out and highlight the threaded beads as you go along to make it easier to find your way around.



★ Step 2/8

Pass the wire through the hole in the middle spacer. Pay attention to the direction of the spacer. Pass the needle through the bead set a second time to go back to the very beginning and tighten.



★ Step 3/8

You can do the following in 2 different ways. Either you weave the strands of beads strand by strand and you tie the thread at each round trip and then you take a new thread to make the next strand, or you go from one hole to another with the same thread but the thread will be seen on the back of the interlayer and you will have to make 3 passes. In any case, the string of beads given in step 1 must be repeated for each hole of the spacer. The version shown is the one where you pass on the back of the tip to access the next hole and where you pass 3 times through the beads.



★ Step 4/8

Normally with 2.5 m of wire, you should be able to fix 3 strands. Finish by tying the thread with a double knot just below the hole and then tuck the two strands into the beads.



★ Step 5/8

Continue to weave the strands on the other side of the nozzle to avoid carelessly twisting the threads. The part we are weaving is one side of the collar. Once you have woven all 15 strands on this side, move to the other side.



★ Step 6/8

Now weave the part of the middle that brings the two sides together. You can also weave the middle part with only turquoise beads instead of the triangle, but you will probably need to add a bead bag. Here is the sequence of beads from the smallest to the largest strand :

- 3D, 10C, 1B, 1D, 1B, 5A, 1B, 1D, 1B, 5A, 1B, 1D, 1D, 10C, 1B, 1D, 1B, 5A, 1B, 1D, 5A, 1B, 1D, 1B, 10C, 3D.
- 3D, **12C**, 1B, 1D, 1D, 1B, 5A, 1B, 1D, 1B, 5A, 1B, 1D, 1B, 10C, **2B**, **1D**, **2B**, 10C, 1B, 1D, 1B, 5A, 1B, 5A, 1B, 1D, 1B, **12C**, 3D.
- 3D, **14C**, 1B, 1D, 1B, 5A, 1B, 1D, 1D, 1B, 10C, 2B, **3D**, **2B**, 10C, 1B, 1D, 1B, 5A, 1B, 1D, 5A, 1B, 1D, 1B, **14C**, 3D.
- 3D, **16C**, 1B, 1D, 1D, 1B, 5A, 1B, 1D, 1B, 5A, 1B, 1D, 1B, 10C, 2B, 2D, **1A**, 2D, 2B, 10C, 1B, 1D, 1B, 5A, 1B, 1D, 1B, 5A, 1B, 1D, 1D, 1B, **16C**, 3D.
- 3D, **18C**, 1B, 1D, 1D, 1B, 5A, 1B, 1D, 1D, 1B, 10C, 2B, 2D, **3A**, 2D, 2B, 10C, 1B, 1D, 1D, 1B, 5A, 1B, 5A, 1B, 1D, 1D, 1B, **18C**, 3D.
- 3D, **20C**, 1B, 1D, 1B, 5A, 1B, 1D, 1D, 1B, 10C, **2B**, 2D, 2A, 1B, 2A, 2D, 2B, 10C, 1B, 1D, 1B, 5A, 1B, 1D, 1B, 5A, 1B, 1D, 1B, **20C**, 3D.
- 3D, **22C**, 1B, 1D, 1B, 5A, 1B, 1D, 1D, 1B, 10C, 2B, 2D, 2A, **3B**, 2A, 2D, 2B, 10C, 1B, 1D, 1B, 5A, 1B, 1D, 1B, 5A, 1B, 1D, 1B, **22C**, 3D.
- 3D, **24C**, 1B, 1D, 1D, 1B, 5A, 1B, 1D, 1B, 10C, 2B, 2D, 2A, **5B**, 2A, 2D, 2B, 10C, 1B, 1D, 1B, 5A, 1B, 1D, 1B, 5A, 1B, 1D, 1B, **24C**, 3D.
- 3D, **25C**, 1B, 1D, 1D, 1B, 5A, 1B, 1D, 1B, 10C, 2B, 2D, 2A, **7B**, 2A, 2D, 2B, 10C, 1B, 1D, 1B, 5A, 1B, 1D, 1B, 5A, 1B, 1D, 1B, **25C**, 3D.
- 3D, **26C**, 1B, 1D, 1B, 5A, 1B, 1D, 1D, 1B, 10C, 2B, 2D, 2A, **9B**, 2A, 2D, 2B, 10C, 1B, 1D, 1B, 5A, 1B, 1D, 1B, 5A, 1B, 1D, 1B, **26C**, 3D.
- 3D, **27C**, 1B, 1D, 1B, 5A, 1B, 1D, 1D, 1B, 10C, 2B, 2D, 2A, **11B**, 2A, 2D, 2B, 10C, 1B, 1D, 1B, 5A, 1B, 1D, 1B, 5A, 1B, 1D, 1B, **27C**, 3D.
- 3D, **28C**, 1B, 1D, 1B, 5A, 1B, 1D, 1D, 1B, 10C, 2B, 2D, 2A, **13B**, 2A, 2D, 2B, 10C, 1B, 1D, 1B, 5A, 1B, 1D, 1B, 5A, 1B, 1D, 1B, **28C**, 3D.
- 3D, **29C**, 1B, 1D, 1D, 1B, 5A, 1B, 1D, 1B, 10C, 2B, 2D, 2A, **15B**, 2A, 2D, 2B, 10C, 1B, 1D, 1B, 5A, 1B, 1D, 1B, 5A, 1B, 1D, 1B, **29C**, 3D.
- 3D, **30C**, 1B, 1D, 1B, 5A, 1B, 1D, 1D, 1B, 10C, 2B, 2D, 2A, **17B**, 2A, 2D, 2B, 10C, 1B, 1D, 1B, 5A, 1B, 1D, 1B, 5A, 1B, 1D, 1B, **30C**, 3D.
- 3D, **31C**, 1B, 1D, 1B, 5A, 1B, 1D, 1D, 1B, 10C, 2B, 2D, 2A, **19B**, 2A, 2D, 2B, 10C, 1B, 1D, 1B, 5A, 1B, 1D, 1B, 5A, 1B, 1D, 1B, **31C**, 3D.



★ Step 7/8

Then weave the small slots in the end caps with the following sequence: 2D, 1B, 2C, 1B, 2D. To do this, tie the thread to a hole and thread the 8 beads through the opposite hole and through the next hole on the back of the spacer to weave the next 8 beads. Tie the thread, tuck it into the beads and cut it.



★ Step 8/8

Cut 2 pieces of chain about 5 cm long. Attach each one to the ends with an open ring and fasten the clasp.



Result