

TURQUOISE AND CREAM SEED BRACELET MIYUKI 11/0 PONDO STITCH TECHNIQUE

By : *Alice Gerfault*



Advanced



0 minutes

How do I make a Pondo Stitch bracelet?

How to make a Pondo Stitch bracelet?

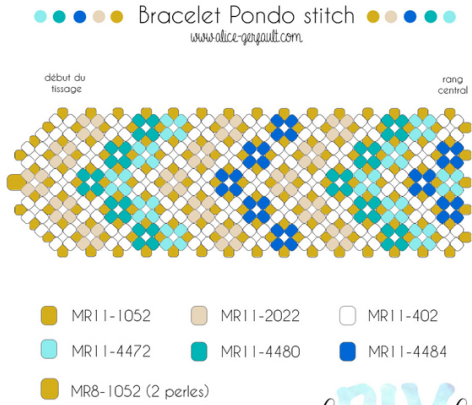
Hmm it smells good in summer here, the cream color of turquoise, blue, gold all that reminds us of the beach ... and Greece! We just have to hurry to put our toes in the hot sand and the salty sea.

And in the evening, aperitif and tapas, a pretty dress, tanned skin and obviously this pretty cuff in rockery Miyuki 11/0 wow effect guaranteed!

And it's Alice Gerfault who made this video tutorial, find her on her Instagram account and find many DIY on her blog .

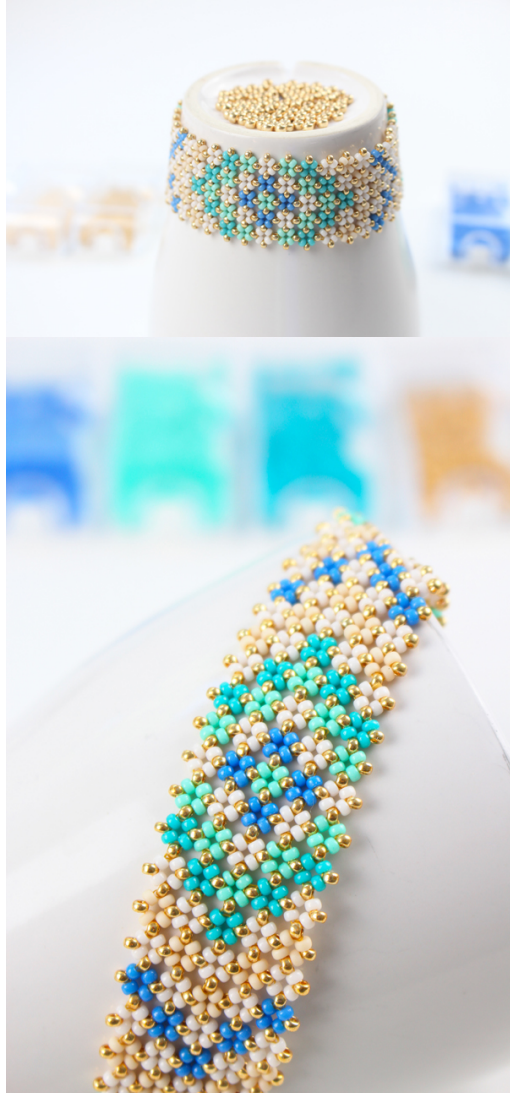
To give you a little help we have written a technical sheet to learn everything about Pondo Stitch , we have even prepared a small historical part to go back to the origins of this technique.

Want to personalize your bracelet? Don't hesitate to take a look at our Miyuki 11/0 rockeries (or another size), we offer you a base but never forget to let your imagination speak and adapt each of our tutorials to your desires and your wardrobe. To help you, find below the diagram of Alice Gerfault to make the cuff with the color palette so as not to be mistaken:



alice gerfault

And here is the result, canon right ?!



And now it's your turn to play, share the result on social networks - on our Facebook page - on our Instagram page.

Which material to use for Turquoise and cream seed bracelet Miyuki 11/0 Pondo Stitch technique?

SUPPLIES



Round jumpings open 5x0.8 mm Gilded with fine 24K x25
Ref. : ACC-560
Quantity : 1



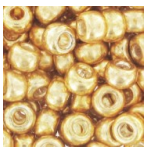
Cymbal - Terminator for Miyuki 8/0 seed beads weaving 6 mm Alona Fine Gold plated x1
Ref. : ACT-658
Quantity : 2



fine Gold tone extension chain 60mm
Ref. : FRM-074
Quantity : 1



Clasp - lobster claw 11 mm fine Gold plated x1
Ref. : FRM-947
Quantity : 1



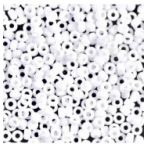
Miyuki Seed beads 8/0 1052 - Galvanized Gold x8g
Ref. : MR08/1052
Quantity : 1



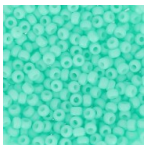
Miyuki Seed beads 11/0 1052 - Galvanized Gold
Ref. : MR11/1052
Quantity : 1



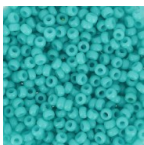
Miyuki Seed beads 11/0 2022 - Opaque Antique Beige Mat
Ref. : MR11/2022
Quantity : 1



Miyuki Seed beads 11/0 402 - Opaque White
Ref. : MR11/402
Quantity : 1



Miyuki Seed beads Duracoat 11/0 4472 - Opaque Catalina x8g
Ref. : MR11/4472
Quantity : 1



Miyuki Seed beads Duracoat 11/0 4480 - Opaque Underwater Blue x8g
Ref. : MR11/4480
Quantity : 1



Miyuki Seed beads Duracoat 11/0 4484 - Opaque Delphinium x8g
Ref. : MR11/4484
Quantity : 1



Miyuki Beading needles x6
Ref. : OAC-162
Quantity : 1



Xuron 450 jewelry pliers for a quality and precision work x1
Ref. : OTL-845
Quantity : 1



Cutting pliers Flush cutter Econo
Ref. : OUTIL-472
Quantity : 1



Miyuki Nylon Beading thread B 0.25 mm Gold x50 m
Ref. : UFC-497
Quantity : 1

Result

