

DRUSE AND MIYUKI PEYOTE NECKLACE FRINGES

By : Perles & Co



Easy



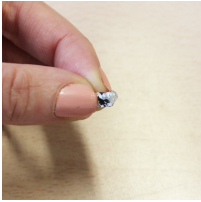
0 minutes



Step 1 :
Start taking 3 pieces of cord of 12 cm each.
Make a braid and fix it with masking tape to easily add the terminals.
Adjust the length of the braid to the length of the pendant fringes.



Step 2 :
Put a dot of glue type E6000 or epoxy 2 components to the ends of the braid.



Step 3 :
Using a needle realize a weave brick stitch along the braid.
Insert the needle into the braid, put 2 beads, go back in the braid and in the last bead.
Continue like this by threading the beads one by one.



For more details on brick stitch, view [How to do a Brick Stitch weaving 2](#).
Realize weaving in brick stitch approximately 6 row and finish by making fringes adding pieces of chain ends.

Step 4 :
Put a pin head in the fringes of the pendant hole and form a loop at the end of it.
For more detail : [Click on this link](#).



Step 5 :
Sew the pendant fringe at the back of the braid.



Step 6 :
Cut 2 pieces of chain about 15 cm each.
Then connect all the elements together using open rings.



For beautiful finishes, you can add a pompon to the clasp and small charms made with pin head and Miyuki to the chain.

Which material to use for Druse and Miyuki Peyote Necklace fringes?

SUPPLIES



White Cord 2mm with Silver tone thread x 1m
Ref. : BAN-978
Quantity : 1



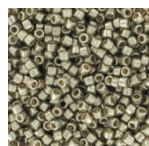
Chain with oval links 2.2mm fine Gold plated x 1m
Ref. : CHU-084
Quantity : 1



Miyuki Delica 11/0 DB0201 - Opaque White Pearl Ceylon
Ref. : DB-0201
Quantity : 1



Miyuki Delica 11/0 DB1563 - Opaque Mandarin Luster x 8g
Ref. : DB-1563
Quantity : 1



Miyuki Delica Duracoat 11/0 DB1851 - Galvanized Light Pewter
Ref. : DB-1851
Quantity : 1



Cotton Pompon 15 mm Grey/Gold tone HQ x1
Ref. : LCD-532
Quantity : 1



Plain Glue-In Cord End caps with Ring for 4mm cords - Gold Dine Platedx10
Ref. : META-674
Quantity : 1



Eye pins 70x0.7mm fine gold plated x10
Ref. : OAC-050
Quantity : 1



Miyuki Beading needles x6
Ref. : OAC-162
Quantity : 1



Head pin 25x0.8mm soft gold color x50
Ref. : OAC-248
Quantity : 1



One-G thread 0.25mm White x45m
Ref. : UFC-483
Quantity : 1

Result

