

## RING WITH MIYUKI DELICAS WEAVING

By : Perles & Co



Easy



0 minutes

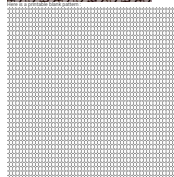
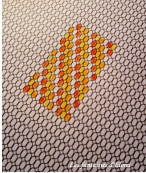
Equipment needed: a pair of scissors, a needle, some thread, some Miyuki Delica 11/0, the golden ring used as support. You also need a [beading loom](#) as well as [beading cards](#) to use for the top of the loom and the bottom of the loom.



Step 1:  
Put the settings on the beading loom.  
If you don't know how to set a beading loom, here is a technical sheet that will help you: [beading loom](#)



Step 2:  
On a pattern, transfer your beading drawing. Each square represents a bead.



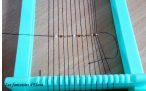
Use another piece of string with a needle that you will use for the first string of your beading loom.



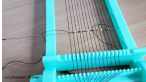
Step 4:  
Insert the string in the first row of your pattern.



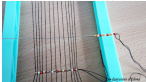
Step 5:  
Insert the string in the second row of your pattern and place each bead in between each string.



Step 6:  
Now insert the string in the third row of your pattern and place each bead in between each string.



Step 7:  
Repeat on the needle the beads needed to make the second row following your pattern.



Step 8:  
Repeat on the needle the beads needed to make the third row following your pattern.



Step 9:  
Repeat the same operation for each row until your drawing is finished.



Step 10:  
Remove the string from the beading loom, one by one, with the help of a needle, into the last and one before last row. When this is done, cut off any excess string.



Step 11:  
Your beading creation is completed, all you need to do is place it on the ring and let it dry properly.



Your ring is now finished!

## Which material to use for Ring with Miyuki Delicas weaving?

### SUPPLIES



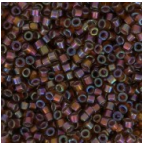
large ring 21 mm fine gold plated x1  
Ref. : BAGUE-204  
Quantity : 1



Miyuki Delica 11/0 DB0201 - Opaque White Pearl Ceylon  
Ref. : DB-0201  
Quantity : 1



Miyuki Delica 11/0 DB0601 - Dyed Silver Lined Dark Burnt Orange x8g  
Ref. : DB-0601  
Quantity : 1



Miyuki Delica 11/0 DB1692 - Silver Lined Glazed Dark Honey AB x8g  
Ref. : DB-1692  
Quantity : 1



Miyuki Delica Duracoat 11/0 DB1832 - Galvanized Gold  
Ref. : DB-1832  
Quantity : 1



Nymo thread B 0.20 Black 66m x1  
Ref. : UFC-056  
Quantity : 1

### SUPPLIES



Miyuki Beading needles x6  
Ref. : OAC-162  
Quantity : 1



Jewel Glue Hasulith 30ml  
Ref. : OUTIL-007  
Quantity : 1



Metal Beading Loom  
Ref. : OUTIL-217  
Quantity : 1

Result