

EMBROIDERED SWIMMING SUIT MIYUKI DELICAS

By : Spring in Fialta



Easy



0 minutes



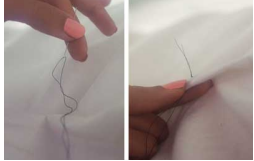
How to customize your swimsuit?

There are 3 embroidery techniques issued from the same principle

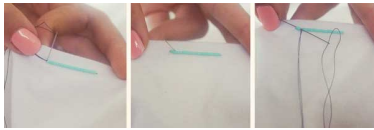
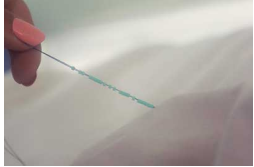


1. The long straights' technique
2. The curves to be followed technique
3. The how to do a 'pea stitch' technique

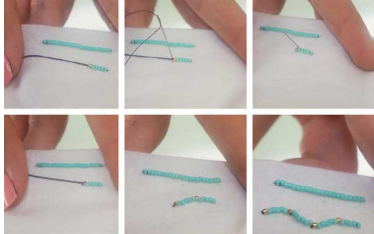
Step 1 :
Start by cutting a piece of thread long enough to cover 2 times the size of the segment + a little one for the knot.
Pass the thread through the needle and tie a knot (or 2) at the thread's two ends. This will allow your embroidery to be more solid as a double thread will back up your pearls!



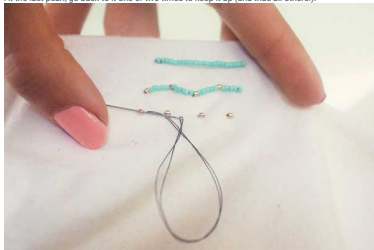
1st Technique
Put all necessary pearls in the right segment you want to embroider.
Poke your needle where the pearl/ segment should arrive. Bring out the needle 'backwards' one or two pearls, then go again in the pearls and fasten them at the end of the segment.
You can then cut your thread, tie knots (I double simple knots with the two pieces of my thread).



2nd Technique
You will basically follow the same technique as for the long straights except that as you follow a curve, it will make a series of small segments of 5/6 pearls.



3rd Technique
This technique allows you to do a small 'pea stitch' with your pearls.
You put a pearl, and then you just poke thereafter.
Get out the needle a few millimeters away, then put the pearl and sew.
Be careful not to pull on the sewing thread or it can crumple the fabric.
At the last pearl, go back to it one or two times to keep it up (and thus all others).



On the process of creating the embroidered swimming suit, I used the 3 technical methods as you can see: (1st) the long segments (2nd) around the top and bottom of the strip and finally (3rd) the decorative 'pea stitch'.
It is possible to insert sewing elements.

Caution: Miyuki Duracoat has better resistance than conventional colors, however it is possible that those latter 'fade' with time. It is not recommended to wash them in the washing machine after the embroidered swimming suit is customized.

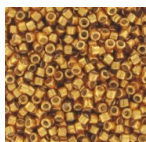


Which material to use for Embroidered swimming suit Miyuki Delicas?

SUPPLIES



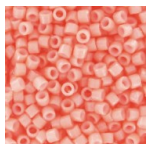
C-Lon thread AA 0.15mm Black x 68 m
Ref. : C-LON-037
Quantity : 1



Miyuki Delica Duracoat 11/0 DB1833 - Galvanized Yellow Gold
Ref. : DB-1833
Quantity : 1



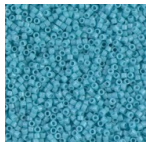
Miyuki Delica 11/0 DB2101 - Duracoat Opaque Light Lemon Ice
Ref. : DB-2101
Quantity : 1



Miyuki Delica 11/0 DB2112 - Duracoat Opaque Dark Salmon
Ref. : DB-2112
Quantity : 1



Miyuki Delica 11/0 DB2117 - Duracoat Opaque Carnation
Ref. : DB-2117
Quantity : 1



Miyuki Delica 11/0 DB2128 - Duracoat Opaque Nile Blue
Ref. : DB-2128
Quantity : 1



Miyuki Beading needles x6
Ref. : OAC-162
Quantity : 1

Result