

PINEAPPLE NECKLACE AND ENAMELLED COB CHAIN

By : Perles & Co



Easy



0 minutes

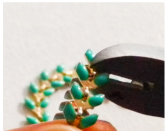
Step 1:
Open one of the chain link spacer.



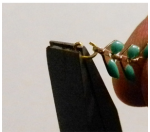
Step 2:
Connect the pendant to the chain with an open ring.



Step 3:
To cut the cobs chain, cut the bar used for connecting 2 cobs and cut the ring of this same cob. This will allow you to split the chain while using its rings. Choose the color and the number of cobs that you want.



Step 4:
Take 2 chain link spacers and hang the cobs chain.



Step 5:
Insert an other piece of cob chain into the second link spacer. Repeat as many times as you want.



Step 6:
Connect your chain piece to the chain with the pineapple.



Repeat the steps to create a necklace of approximately 50 to 55 cm.



Note: In the list below, the string reference has been modified because the one used in the tutorial is a non-tracked product.

Which material to use for Pineapple Necklace and enamelled Cob chain?

SUPPLIES



Chain with enameled cobs 6.3mm white gold tone x 50cm
Ref. : CHR-098
Quantity : 1



Chain with enameled cobs 6.3mm neon orange gold tone x 50cm
Ref. : CHR-100
Quantity : 1



Chain with enameled cobs 6.3mm Mint gold tone x 50cm
Ref. : CHR-104
Quantity : 1



Bilbao Chain 2.5mm fine Gold plated x1m
Ref. : KCH-226
Quantity : 1



Jumprings open 4x0.6mm Gold tone x100
Ref. : OAC-436
Quantity : 1



Pineapple pendant 43 mm gold tone x1
Ref. : PDT-739
Quantity : 1

Result