

PENDANT WITH SEED BEADS AND BALL WITH MOBYDUO

By : Karole's beads



Intermediate



0 minutes

How to make a pendant with Moby Duo?
How to make a pendant in the shape of a ball?

Equipment used
- mobyduo capri gold
- Miyuki 15 seed rockery
- 12mm round bead
- mesh PureCrystal rose gold hotfix
- miyuki needles
- 0.10 fireline wire
- ball head nail

Step 1: You will work with 2 needles that we will place at each end of our thread. Thread 5 pearls, iron in all the pearls and close your circle with a double knot then reassemble your 2 threads, crossing them in the hole at the top of the 1st pearl. BE CAREFUL OF YOUR PEARLS, the mobyduos have a flat side and a rounded side, all your pearls must have the rounded side on the same side of your ball. If you start with the flat side towards you, the left and right thread will be reversed, in this tutorial the rounded side must be facing you.



Step 2: Thread 4 beads on the left thread and with your right thread cross your threads in the last bead to close your circle and reassemble them in the hole at the top of this bead.



Step 3: Pass with the straight thread into the 1st pearl already present on the right and on the left thread thread 3 beads, close the circle and wind your 2 threads at the top of the last pearl.



Step 4: Pass with the right thread into the 1st pearl on the right and on the left thread thread 3 beads, close the circle and wind your 2 threads at the top of the last pearl.

Step 5: Pass with the right thread into the 1st pearl on the right and on the left thread thread 3 beads, close the circle and wind your 2 threads at the top of the last pearl.

Step 6: Pass with the right thread into 2 beads on the right and on the left thread thread 2 beads, close the circle and wind your 2 threads at the top of the last bead.

Step 7: Pass with the right thread into the 1st pearl on the right and on the left thread thread 3 beads, close the circle and wind your 2 threads at the top of the last pearl.

Step 8: Pass with the right thread in the 2 beads on the right and on the left thread thread 2 beads, close the circle and wind your 2 threads at the top of the last bead.

Step 9: Pass with the right thread in the 2 beads on the right and on the left thread thread 2 beads, close the circle and reassemble your 2 threads at the top of the last bead.

Step 10: Pass with the right thread in the 2 beads on the right and on the left thread thread 2 beads, close the circle and wind your 2 threads at the top of the last bead.

Step 11: Pass with the right thread through the 3 beads on the right and on the left thread thread 1 pearl, place your 12 mm round and the rod, close the circle and reassemble your 2 threads at the top of the last pearl.

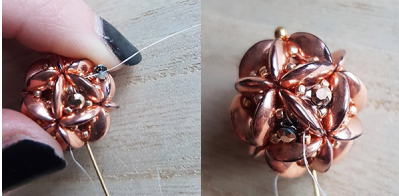


Step 12: Close your ball by going back through the last 5 beads.

Step 13: Thread a rock between each mobyduo and go around your ball with the roc15.



Step 14: Put 1 mesh between the rock 15, get out of a mobyduo, thread the mesh through a corner and come out through the opposite hole of the same mobyduo and do the same all around by going through your mesh so that it fits well between the rocks 15. (photos8 and 9)



Step 15: Cut your rod and form a loop to hang your pendant. Your ball is finished.



Tips: You can have fun with other pearls, there are many possibilities like replacing the mobyduos by superduos or another pearl with 2 holes (halfilla, diamonduo, spinning tops ...) you can also replace the roc 15 by miyuki spacers, mini rounds ... Replace the mesh with other pearls, let your imagination run wild. Did you like this tutorial? Come share with us and our community all your creations: [our Instagram page](#) and [our Facebook page](#)

Which material to use for Pendant with seed beads and ball with mobyduo?

SUPPLIES



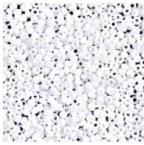
Ball pins 50x0,7 mm - Rose Gold Tone x20
Ref. : ACC-481
Quantity : 1



Fireline braided nylon thread 0.10 mm (4LB) Crystal x46 m
Ref. : FC-030
Quantity : 1



PureCrystal Crystal Mesh 40001 4 rows 11mm Crystal x5cm
Ref. : FCR-961
Quantity : 1



Miyuki Seed beads 15/0 402 - White
Ref. : MR15/402
Quantity : 1



Miyuki Beading needles x6
Ref. : OAC-162
Quantity : 1



3x8mm Crystal Capri Gold Full 2-hole MobyDuo Czech Glass Bead x50
Ref. : PLS-273
Quantity : 1



PureCrystal Pearl 5811 12mm Rose Gold Pearl x1
Ref. : WPL-1181
Quantity : 1

Result