

## MARINE-THEMED JEWELRY: WHICH SEED BEAD COLORS SHOULD YOU CHOOSE?

By : Pauline Perles Co



0 minutes

Summer is here, and with it comes the desire to wear nautical-themed jewelry that evokes the spirit of vacation! Waves, warm sand, salty sea spray... the ocean is an endless source of inspiration for bead jewelry designers. But to create a piece that truly evokes the ocean, choosing the right color combinations for seed beads is essential. From shades of blue to pearlescent sheens and golden accents, we'll guide you step by step in crafting summer jewelry that's sure to make waves this summer.

Whether you're a beginner in beadwork or an experienced designer, this article gives you all the tips you need to pair the right shades and bring your ocean-inspired visions to life.

## Blue Seed Beads for a Nautical and Summery Look

Blue is, of course, the go-to color for evoking the ocean. But be careful: not all blues are the same, and it's precisely by playing with different shades that you'll achieve a realistic and deep effect, worthy of a wave breaking on the sand.

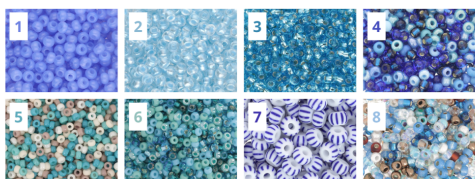
For a soft, pastel blue with a slightly milky hue, [Preciosa 8/0 Solgel Blue 2 Dyed Alabaster seed beads \(1\)](#) are perfect for filling in spaces or creating a monochromatic look. For more brilliance and transparency, opt for [Preciosa 8/0 Crystal Lined Blue Pearl Sfinx seed beads \(2\)](#), which capture the light like a shimmering wave.

If you're looking for a brighter, more vibrant shade, [Preciosa 9/0 Aquamarine Silver Lined seed beads \(3\)](#) beautifully evoke the color of crystal-clear water thanks to their silver interior, which intensifies the blue. To save time while achieving a harmonious color gradient, mixes are your best allies: the [Preciosa 8/0 Aqua mix \(4\)](#) offers a range of complementary blues in a single packet.

As for Miyuki, renowned for its consistency and quality, two mixes are particularly well-suited for marine-themed jewelry:

- the [Miyuki 11/0 Tropical seed bead mix \(5\)](#), which evokes the turquoise waters of lagoons;
- the [Miyuki 11/0 Blue Lagoon seed beads \(6\)](#), with deeper hues, ideal for an ocean effect.

To add structure to your designs with a graphic pattern, the blue and white striped [Preciosa 6/0 seed beads \(7\)](#) bring a very trendy nautical touch. Finally, for a warmer look blending blues and sandy tones, the [Miyuki 8/0 Surf and Sand seed bead mix \(8\)](#) captures the spirit of the beach and the ocean all on its own.



Pro tip: Don't hesitate to mix several sizes of seed beads (6/0, 8/0, 9/0, 11/0) in a single piece. This adds depth and texture to your jewelry, creating a much more natural effect than a uniform stringing pattern.

## Complementary Colors for Nautical Jewelry

Blue on its own can quickly become monotonous. For a balanced look that truly evokes the marine world, it's important to pair your blue seed beads with complementary colors that bring to mind sand, the foam of the waves, or seashells.

Pearlescent white is undoubtedly blue's number one partner when it comes to summer jewelry. [Miyuki 8/0 White Pearl Ceylon seed beads \(1\)](#) add a pearlescent sheen reminiscent of the foam on the waves, while [Miyuki 11/0 Opaque White Celsian Matte seed beads \(2\)](#) offer a more matte and opaque white, perfect for adding structure to a pattern. For larger pieces, [Miyuki 6/0 White seed beads \(3\)](#) help create more prominent accents in a necklace or bracelet.

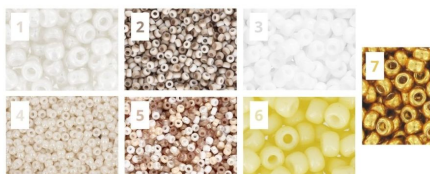
To evoke warm sand, several shades of beige and cream perfectly complement a marine-inspired palette:

- [Miyuki 11/0 Cream Ceylon seed beads \(4\)](#), soft and luminous;
- the [Miyuki 11/0 Soft Beige seed beads \(5\)](#), which combines several shades of sand in a single packet.

A touch of pale yellow, such as [Miyuki Duracoat 8/0 Opaque Light Lemon Ice seed beads \(6\)](#), can evoke sunlight glinting off the water and add a fresh touch to your creation.

Finally, to enhance the overall look with a subtle metallic touch, [Miyuki Duracoat 8/0 Galvanized Gold seed beads \(7\)](#) add golden highlights reminiscent of sand glistening in the sun or a sunset over the ocean. Used sparingly—just a few beads here and there—it prevents your jewelry from looking too busy while still giving it character.

In summary, for a successful nautical color palette, opt for a gradient of blues (2 to 3 shades), complemented by pearlescent or matte white, a touch of sandy beige, and perhaps a hint of gold or pale yellow.



## Our Suggested Tutorials for Marine-Themed Jewelry

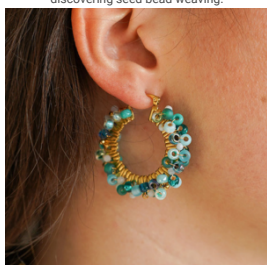
Now that you have all the colors at your fingertips, it's time to get started! Here's a selection of tutorials to help you get going:



**Keychain with a fish pendant made of seed beads:** a fun and quick-to-make accessory, perfect for discovering seed bead weaving.



**Nautical bracelets made with seed beads:** ideal for putting your combinations of blues and whites.



**Seed-bead hoop earrings:** for those who want to add a touch of the seaside to their earrings.



**Blue and white necklace:** a timeless classic that's easy to pair with a summery look.

Our expert tip: If you want colors that last and stand up to the summer heat, opt for Duracoat shades, which are more durable.

## Result

