

THE EYE OF TIGER: MEANING, ORIGINS AND PROPERTIES

By : Laurence T Perles&Co

L'OEIL DE TIGRE

**Signification, origines
et propriétés**



0 minutes

Tiger's eye is a gemstone (formerly known as a "semi-precious stone") that is popular in jewelry and lithotherapy. In a bracelet, a ring or a necklace, its unique yellow-brown color seduces both men and women. Discover all our components for tiger eye jewelry to create beautiful natural stone jewelry.



What is the significance of the tiger's eye?

Tiger's eye is a fine yellow-brown stone, which owes its name to its resemblance to the eyes ... of a tiger. But it has not always had this name. The Mesopotamian populations called it Oculus Belus, which can be translated as the eye of Belus. This name refers to Belus-Marduk, the god of fortune and the most powerful god among the Babylonian gods.

The origin of the tiger's eye

Known since ancient times for the creation of ornamental objects and jewelry, tiger's eye has survived the ages. During the Roman Empire, this gemstone was used by warriors as a talisman to protect themselves during battles and also to give them courage. In the Middle Ages, it was worn as a pendant because it was thought to repel spells and thus ward off the evil eye.

Among Native Americans, this natural stone is considered a very powerful sacred stone. According to their beliefs, the tiger's eye stone would have magical powers to protect against curses, evil spirits and negative energies. It was also a great help for meditation and for being connected to nature.

Among the Chinese, the stone is considered a lucky stone. Ideally placed in a house respecting the feng shui, it would bring positive energies. The Chinese also consider it a stone of luck, attracting wealth and prosperity.

In the 19th century, deposits were discovered in South Africa. Thinking that it was an extremely rare stone, it was then classified as a precious stone and its price was very high.

But, other deposits were discovered in North Africa during the 20th century. Tiger's eye was no longer a rare stone. Its price was therefore devalued and it was reclassified among the semi-precious stones according to the name of the time.



What are the properties of tiger's eye?

This gemstone is part of the quartz family. It has a hardness of 7 on the Mohs scale and a density of 2.68.

It is formed in igneous, metamorphic and sedimentary rocks. It is mostly composed of silicon dioxide.

The stone eye of tiger is part of the family of the stones known as "oeillées" as the eye of cat, the eye of hawk, the eye of snake, the eye of bull, which were very appreciated in the Middle Ages...

What is the color of the eye of tiger?

Transparent or opaque, this gemstone is yellow-brown with darker brown lines.

There are rare reddish, blue-gray or green varieties.

Where to find tiger's eye?

The main deposits are in Australia, Burma, South Africa, Brazil, the United States, China, Namibia, India, Sri Lanka, Madagascar and Russia.



What are the benefits of the eye of tiger?

In lithotherapy, tiger's eye is considered a very powerful stone of protection. It would protect against black magic, spells and evil spells.

It would be able to refocus energies and thoughts and would promote perseverance to achieve goals. It would harmonize yin and yang.

Placed in a room of the house, it would play a role of barrier by chasing away the negativity of the place.

Linked to the solar plexus chakra (third chakra), this natural stone would encourage decision making and self-esteem. Placed on the root chakra (first chakra), it would be useful for accessing greater emotional stability and self-confidence.

The tiger's eye is often used as a meditation stone.

Warning: our gemstones are not sold for lithotherapy. Natural stones can in no way substitute for medical expertise or treatment.

How to clean and purify a tiger eye ?

Like all stones used for lithotherapy, the tiger's eye stone must be cleaned and recharged regularly so that it keeps its beauty and all its benefits.

To purify it, simply clean it by immersing it in a container of distilled salt water for a few hours (avoid tap water as the limestone could damage your stone). Rinse it thoroughly and wipe it with a soft cloth.

You can also pass it over incense smoke or bury it for a few hours in the ground.

If you wish to recharge your tiger's eye stone, place it in sunlight or moonlight for a few hours. The tiger's eye is resistant to heat and light.

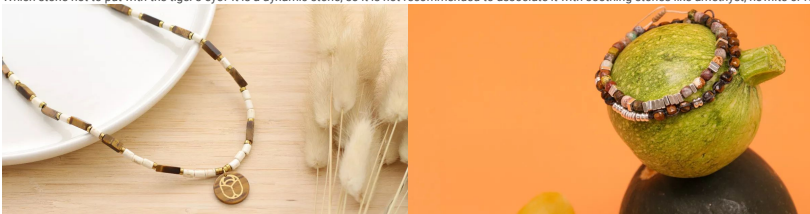
To reinforce this ritual, you can place your stone on a cluster of quartz.

How to wear a stone eye of stem?

This gemstone goes well with the cool tones of 925 silver and stainless steel as well as the warm tones of gold-plated and gold-filled. What to imagine many handmade jewelry!

In lithotherapy, it is advised to wear this stone alone because it is so powerful that it could cancel the benefits of other gemstones. Nevertheless, to reinforce its protective side, you can marry it with a black tourmaline, a black onyx or an obsidian. To strengthen its protection against negative energies, marry it with a pyrite. To act on self-confidence, try the carnelian-tiger's eye duo.

Which stone not to put with the tiger's eye? It is a dynamic stone, so it is not recommended to associate it with soothing stones like amethyst, howlite or rose quartz.



Result