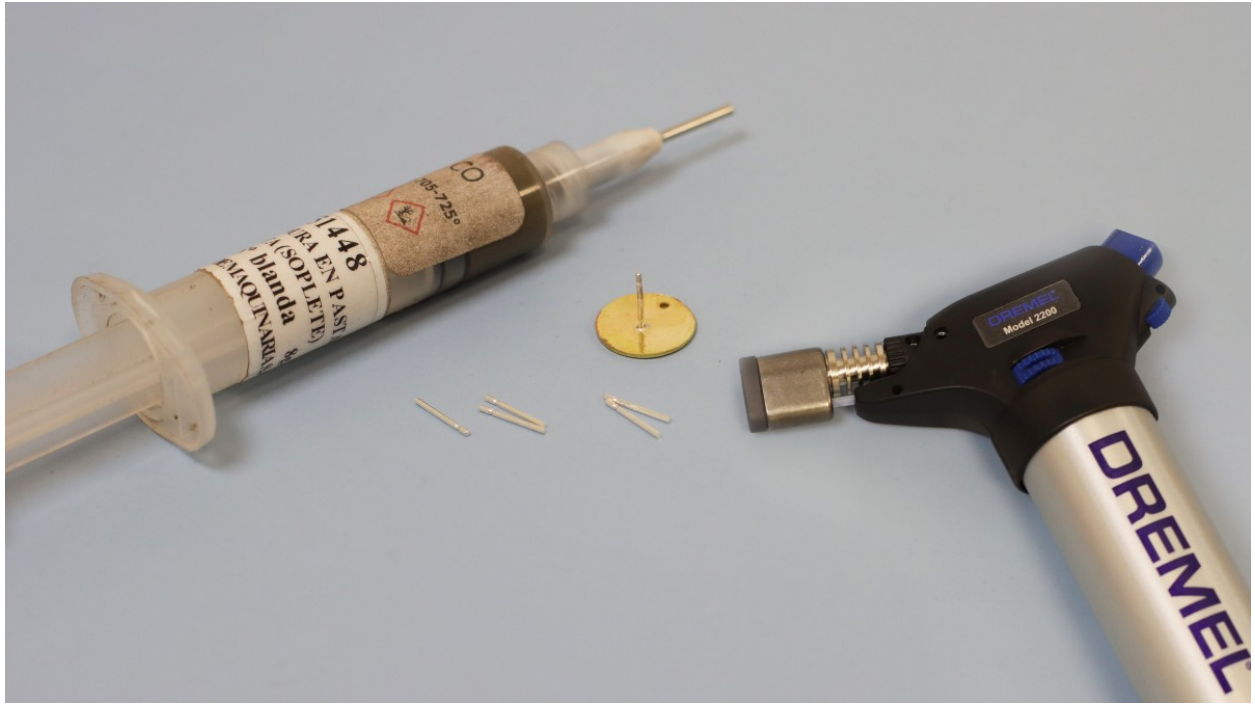


HOW TO SOLDER EARRING POSTS ?

By : Lucie T Perles&Co



0 minutes

Stud earrings are the most popular earrings in the world. A stud ear ring consists of an ornament extended by a stem that crosses the earlobe. At the end of this stem, a butterfly clasp is positioned to hold the earring firmly in place. Very discreet, this invisible fastening gives a floating and light impression that we love.

Whether you want to repair ear studs or create earrings from scratch, there are different techniques to solder earring posts.

In this video tutorial, Lucie gives you tips and tricks to learn how to solder pins on jewelry primers and make custom earrings. You will need a flashlight, silver solder, a refractory brick, soldering pliers and a Dremel.

Warning: before you start, you must have some knowledge of brazing techniques. To practice, we explain in another technical sheet [how to use silver solder](#).

Needless to say, the best way to do it is to practice again and again. So, get your flashlights!

As with all the jewelry techniques we present, we remind you that it is important to work in a well-ventilated room and, above all, to protect yourself by tying your hair back and wearing gloves, a cotton gown and a mask.

Which material to use for How to solder earring posts ??

SUPPLIES



3P Picking Powder for Silver and Gold x1kg
Ref. : ATT-515
Quantity : 1



Yellow Lubricating Beeswax - pure and natural x100g
Ref. : DEK-213
Quantity : 1



DREMEL® : Universal chuck (0,4-3,4 mm)
Ref. : OUT-050
Quantity : 1



Gas blowtorch DREMEL® VersaFlame
Ref. : OUT-388
Quantity : 1



25DREMEL® 3000 Kit (3000-2/25)
Ref. : OUTIL-628
Quantity : 1



DREMEL® Precision Drill Bit Set (7 pcs)
Ref. : OUTIL-733
Quantity : 1



9.5x0.7mm 925 Sterling Silver Soldering earring posts for earstuds x10
Ref. : SSC-499
Quantity : 1



Tweezers pliers to weld - straight tip - 16.5 cm self locking x1
Ref. : TECH-614
Quantity : 1



Copper tweezer 23 cm x1
Ref. : TECH-615
Quantity : 1



Fireproof ceramic honeycomb brick for jewellery making x1
Ref. : TECH-616
Quantity : 1



Silver clay 65% brazing 705-725° x8gr
Ref. : TECH-617
Quantity : 1

steps

★ Step 1/3

Make a notch with the cutter where you want to place your rod.

Small tip: It is advisable to work on a support already pre-polished. It will be easier to polish later.

★ Step 2/3

Position your rod in the notch. Technique of the welding on the fly

★ Step 3/3

Heat at the level of the braze, the paste will blister at first and then liquefy, at this moment the flux evaporates, be careful not to breathe the fumes. You will see the braze melt, you must stop heating immediately.

Let it cool down on a jeweler's pile and then put it in the dryer.

Note that the rod is automatically annealed and therefore a little softer.

Result