

HOW TO ADAPT THE PEYOTE WEAVE TO A WEAVING TIP?

By : Tiffanie Perles&Co



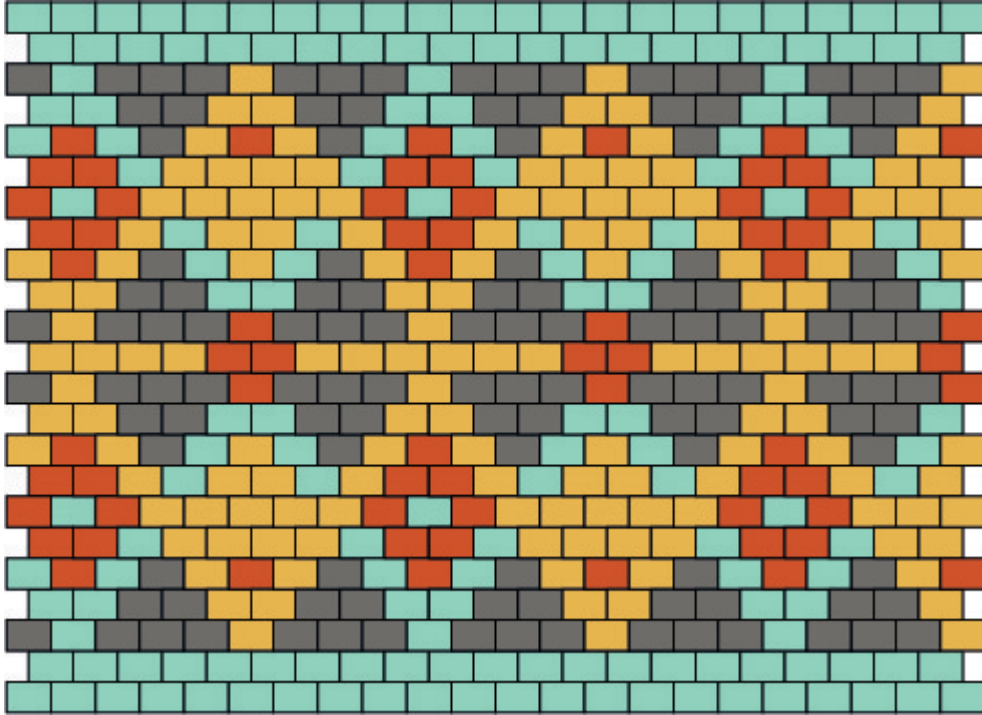
0 minutes

Attention, we inform you that the following tutorial has been translated by the automatic translator Google Traduction. We are not responsible for the errors caused and we apologize in advance for the inconvenience. Feel free to contact our customer service via [this online form](#) if you need help to understand this tutorial.

You wondered if the peyote weave could fit a Beadslide clasp ... The answer is yes!

But it's workable with all other weaving bits !

We tested for you and we show you in this video the trick:



steps

★ Step 1/3

Add a bead after each bead in the last row.

★ Step 2/3

Open the weaving tip by sliding off the top.

★ Step 3/3

Spread the tip with round-nose pliers to allow the weave to slide more easily.

Tighten with nylon-tipped pliers to avoid marking the tip.
Slide the top part back into place.

Result